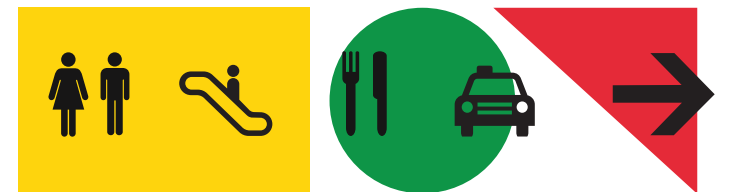


deziqntechnic
signage, wayfinding & mapping

Belgrade Metro

wayfinding architecture study

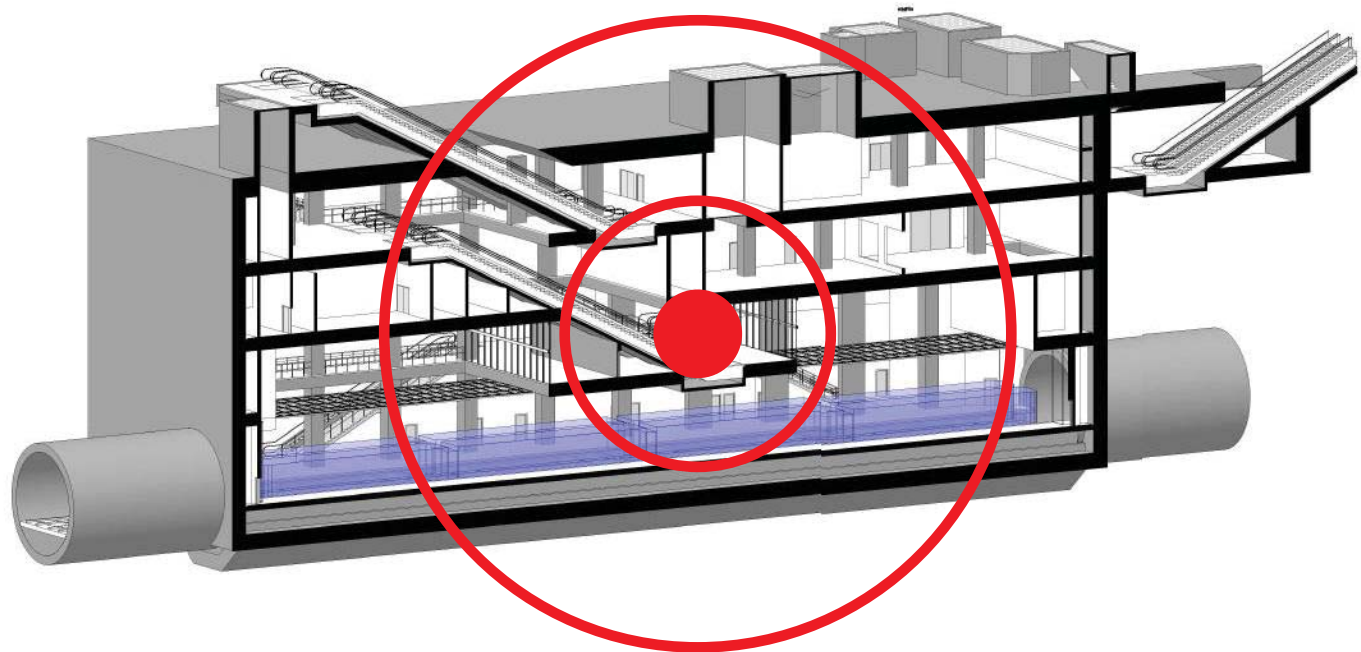
Jug Cerović Architecte DPLG
apr 07, 2022



Belgrade Metro Wayfinding Architecture Study

The goal of this study is to optimize wayfinding, flows and passenger experience by improving the architectural layout of the stations.

1. Analyze the station project
2. Identify potential improvement areas
3. Improve the project with architectural solutions



Belgrade Metro Wayfinding Architecture Study: A three fold approach

1. Floor

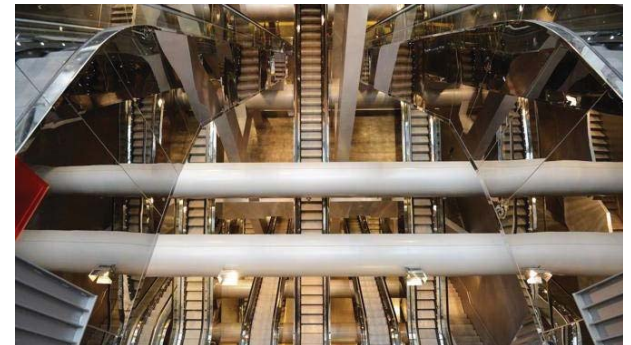
The two-dimensional surface where passengers walk and stand.
The objective is to eliminate superfluous kinks and decision points to create straightforward paths.

2. Air

The three-dimensional volume through which people move.
The objective is to link separate floor levels into one organic whole by creating connecting multi-floor volumes.

3. Light

The four-dimensional space where time meets sight.
The objective is to bring daylight to the underground to connect it with the surface time flow.



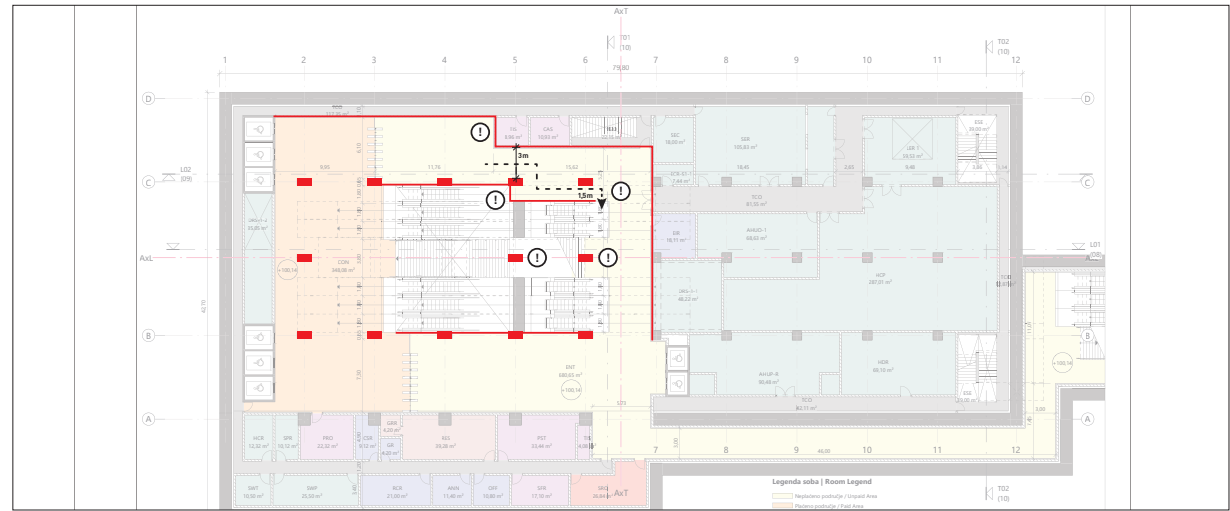
trg republike

Trg republike Floor

1. Straight paths on concourse level

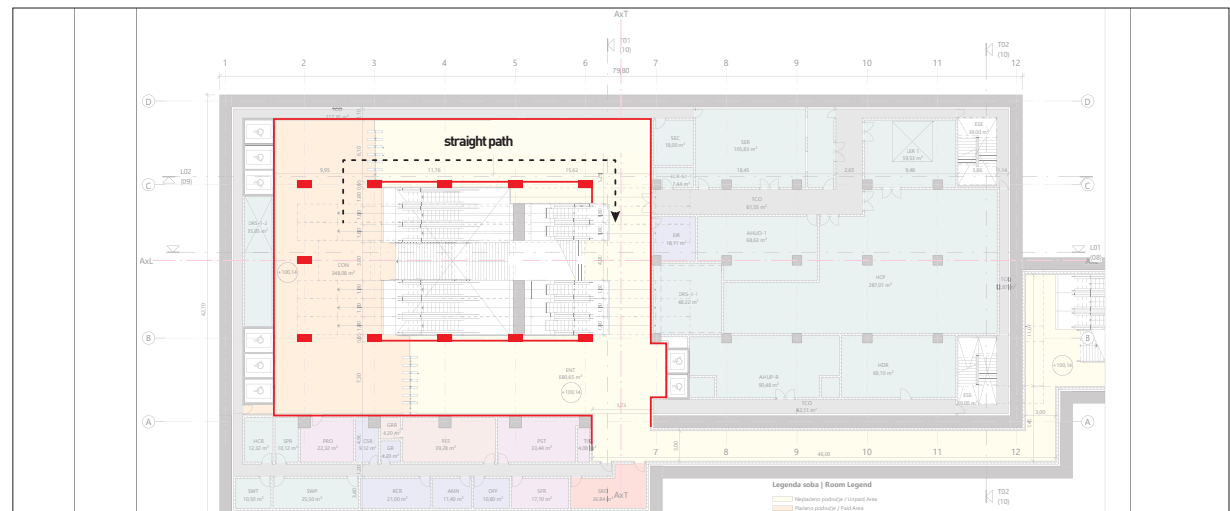
PROJECT

Concourse Level [-1]



IMPROVEMENT

Concourse Level [-1]

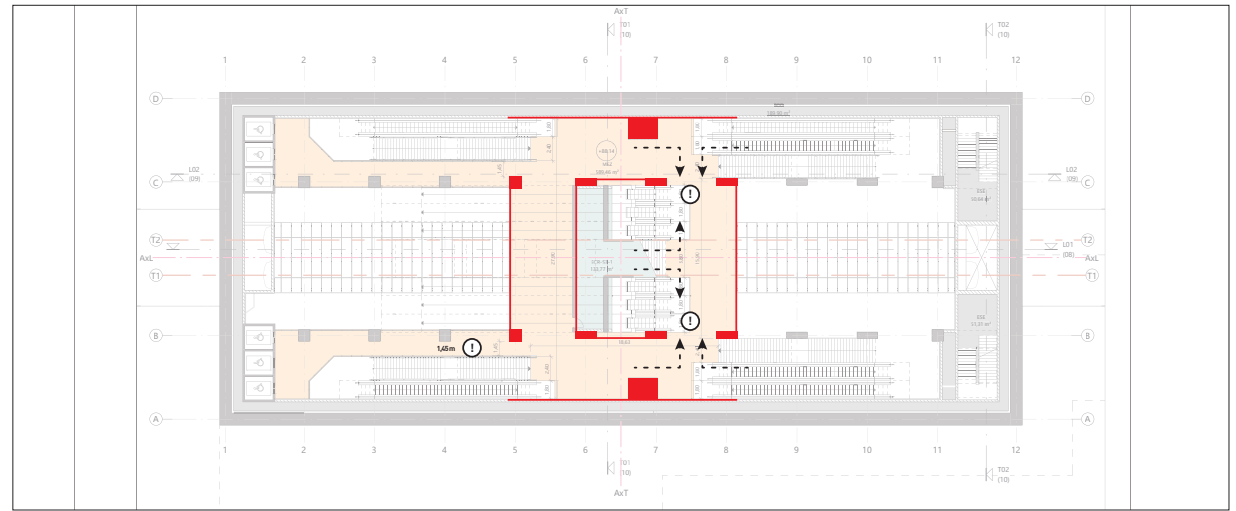


Trg republike Floor

3. Enlarge mezzanine where all flows intersect to avoid congestion.

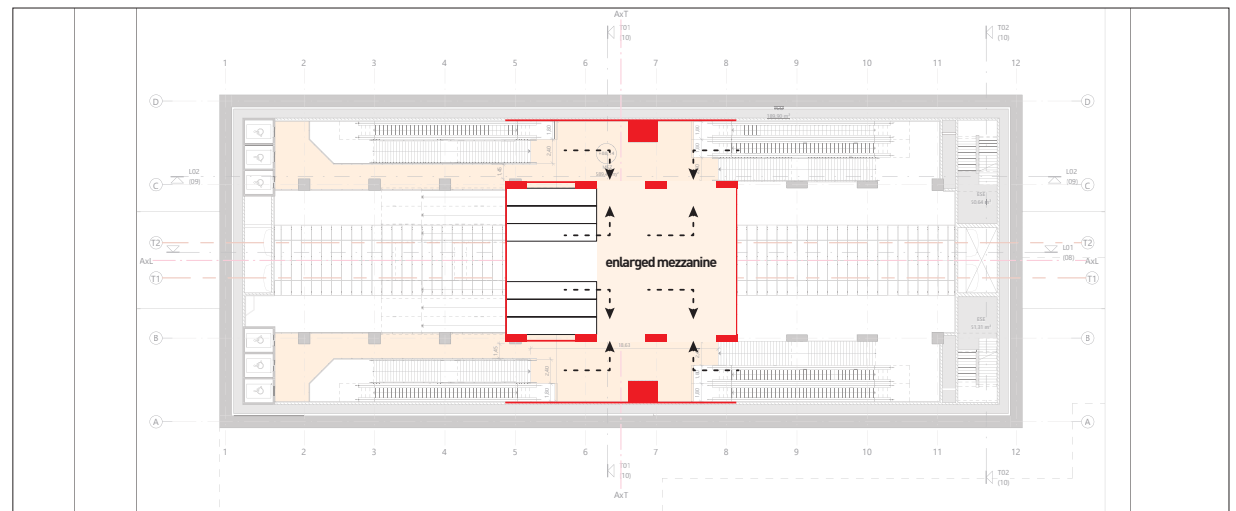
PROJECT

Mezzanine Level [-2]



IMPROVEMENT

Mezzanine Level [-2]



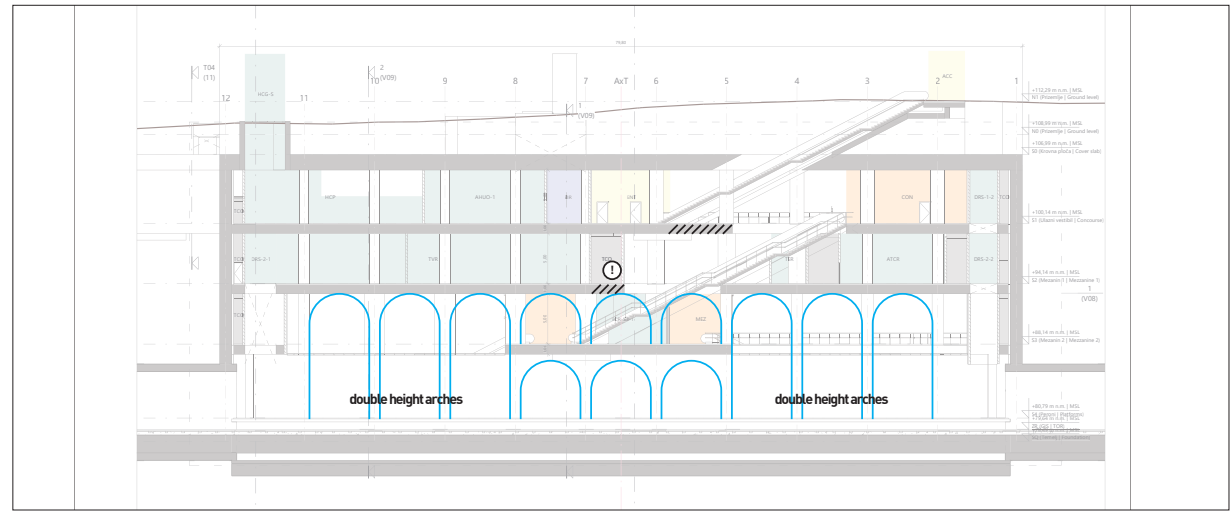
Trg republike

Air

1. Create double height arches to mark the double height platform/mezzanine volumes.

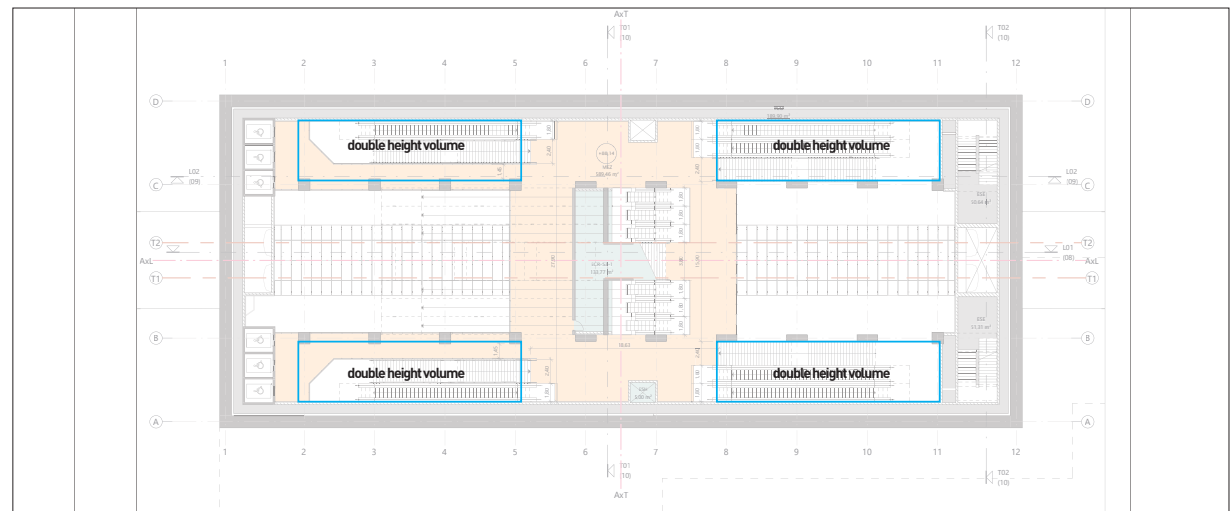
IMPROVEMENT

Section



IMPROVEMENT

Mezzanine Level [-2]

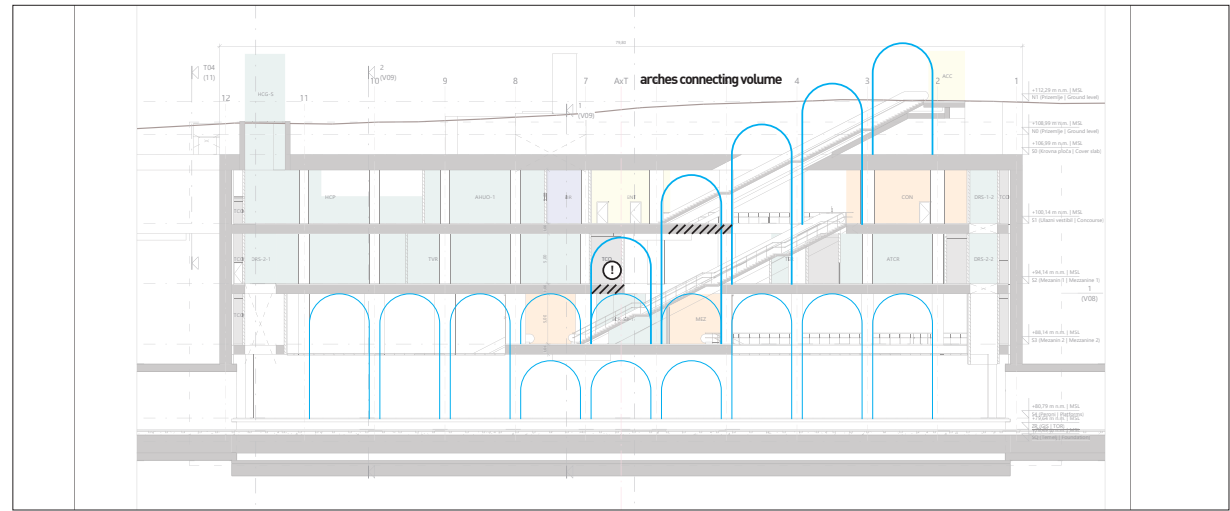


Trg republike Air

2. Neat volumes for vertical communication.

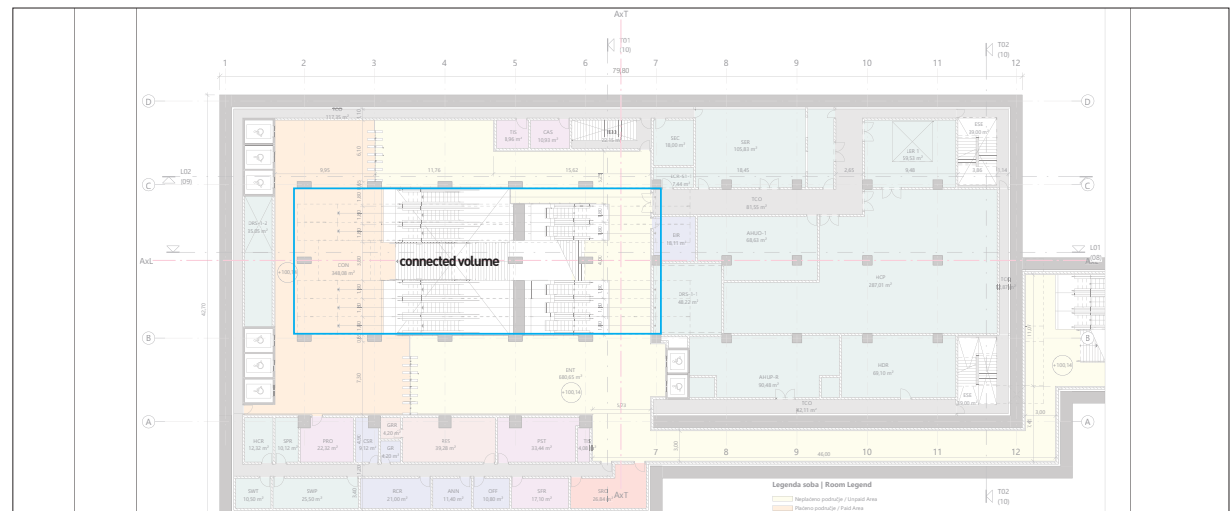
IMPROVEMENT

Section



IMPROVEMENT

Concourse Level [-2]

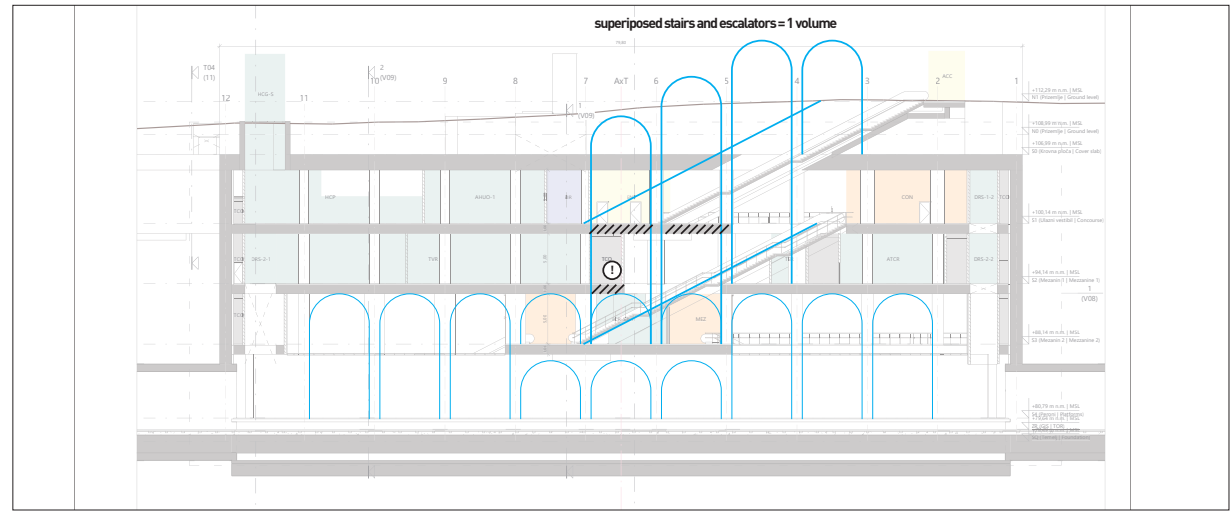


Trg republike Air

3. Superimpose vertical communications inside a single well.

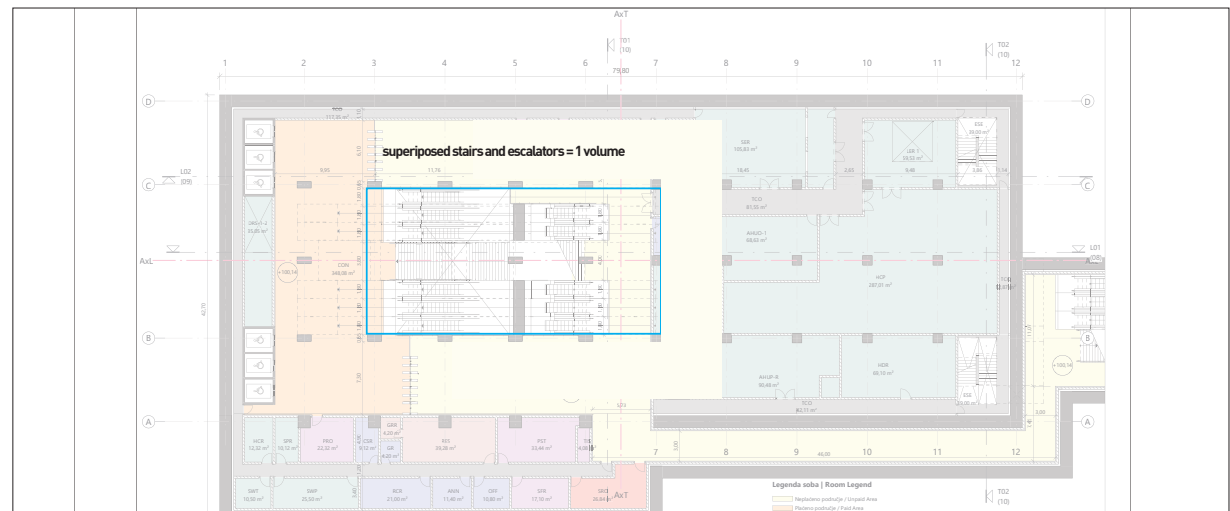
IMPROVEMENT

Section



IMPROVEMENT

Concourse Level [-1]



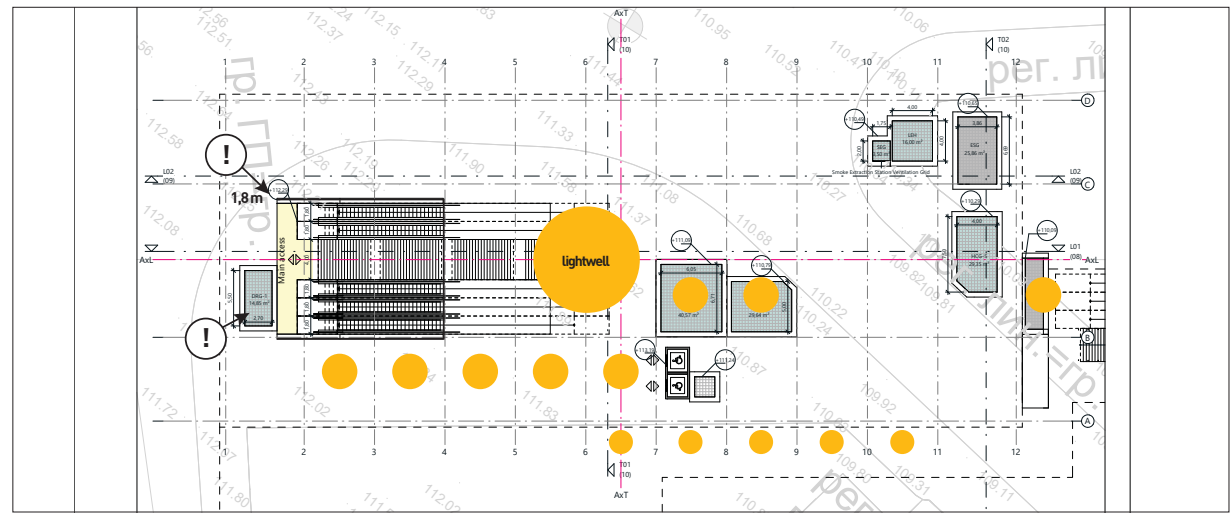
Trg republike

Light

1. Bring daylight to the concourse level with lightwells on ground level.

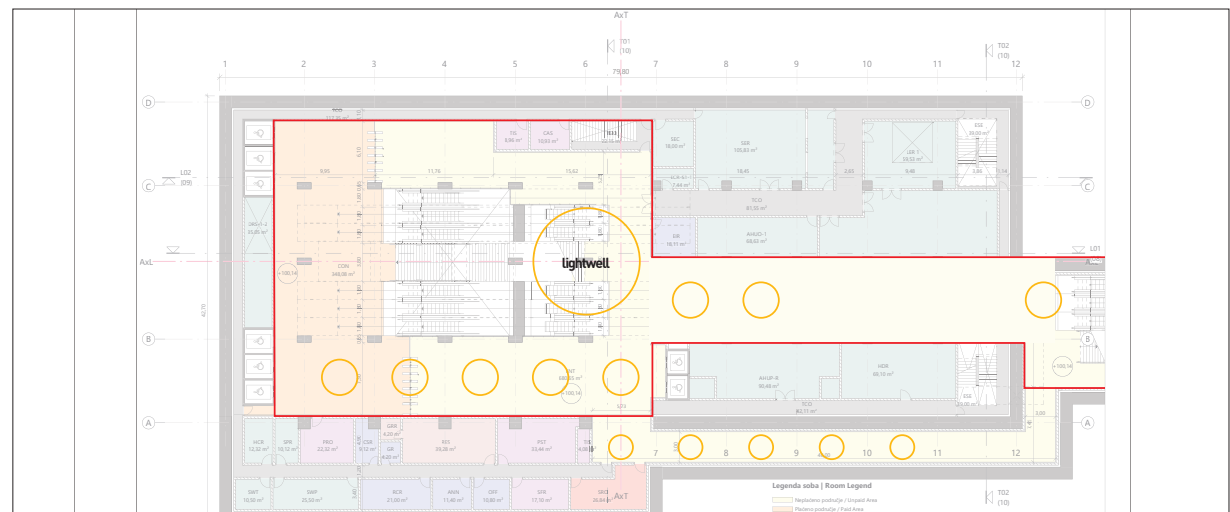
IMPROVEMENT

Ground Level [0]



IMPROVEMENT

Concourse Level [-1]



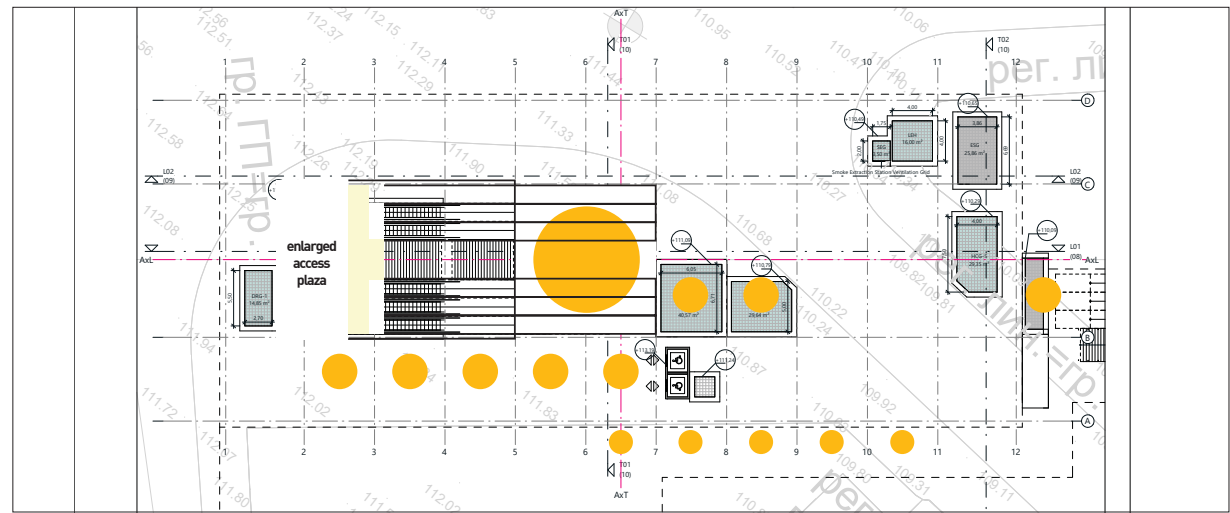
Trg republike

Light

2. Enlarge the main access plaza by superimposing vertical communications.

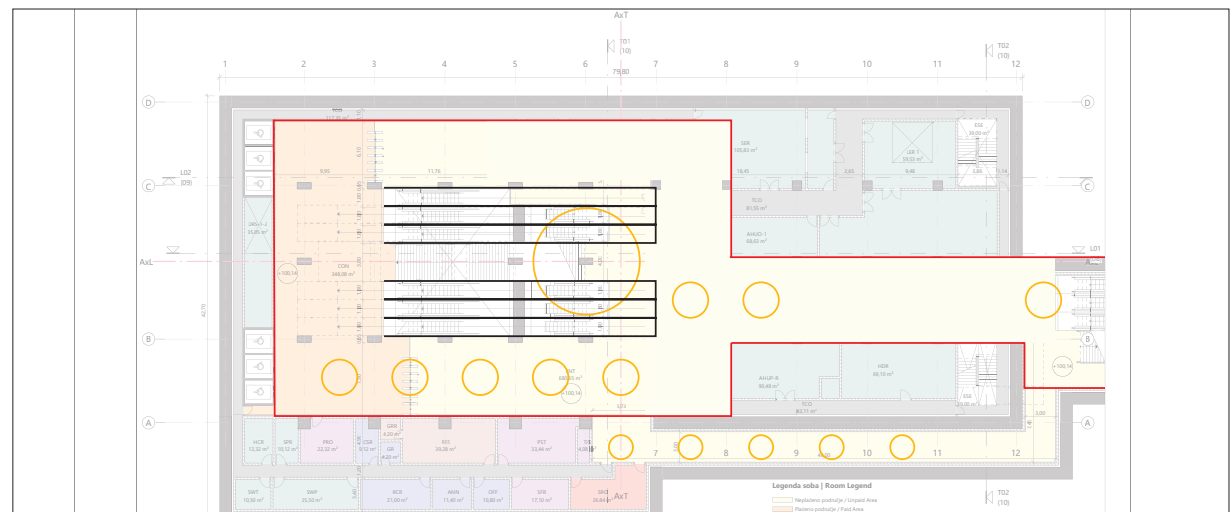
IMPROVEMENT

Ground Level [0]



IMPROVEMENT

Concourse Level [-1]



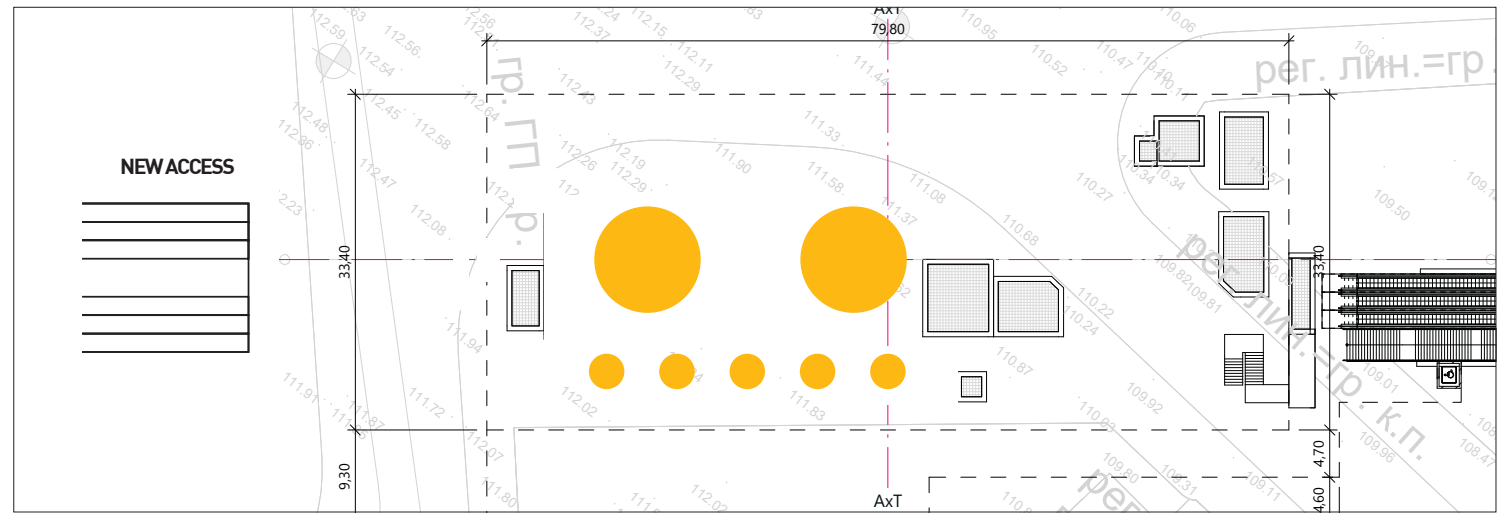
Trg republike Light

3. Create a new access on the plateau of Republic Square, across the street from the projected one.

This creates a straight path for station access and eliminates conflicts and congestion at ground level entrance.

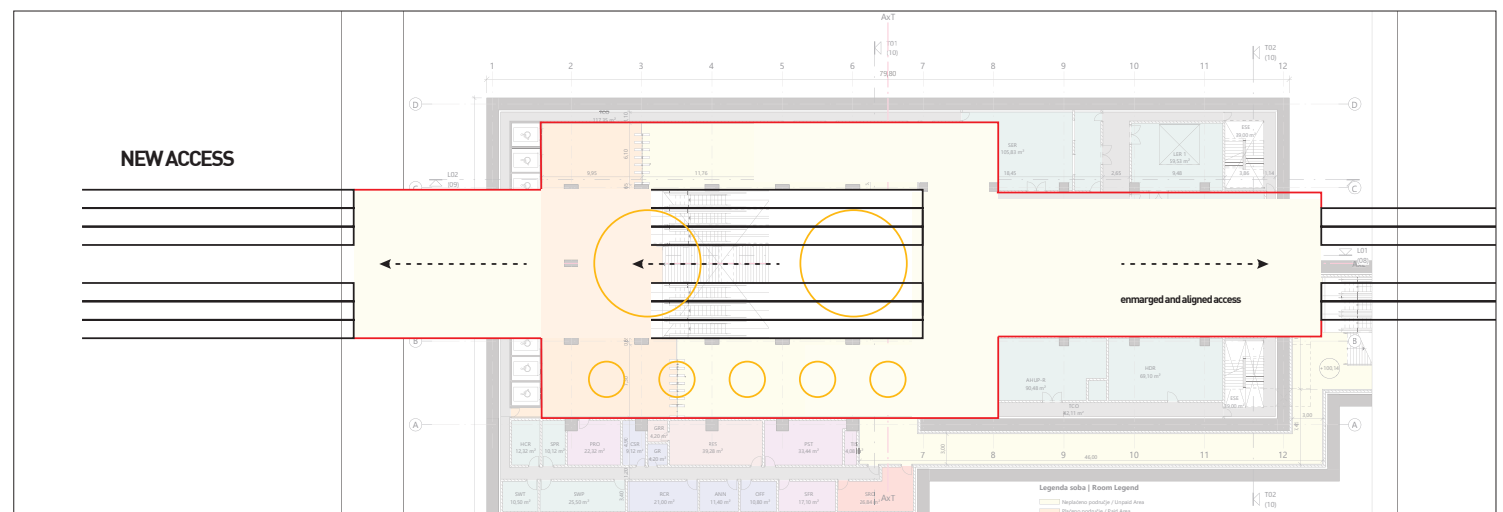
IMPROVEMENT

Ground Level [0]



IMPROVEMENT

Concourse Level [-1]



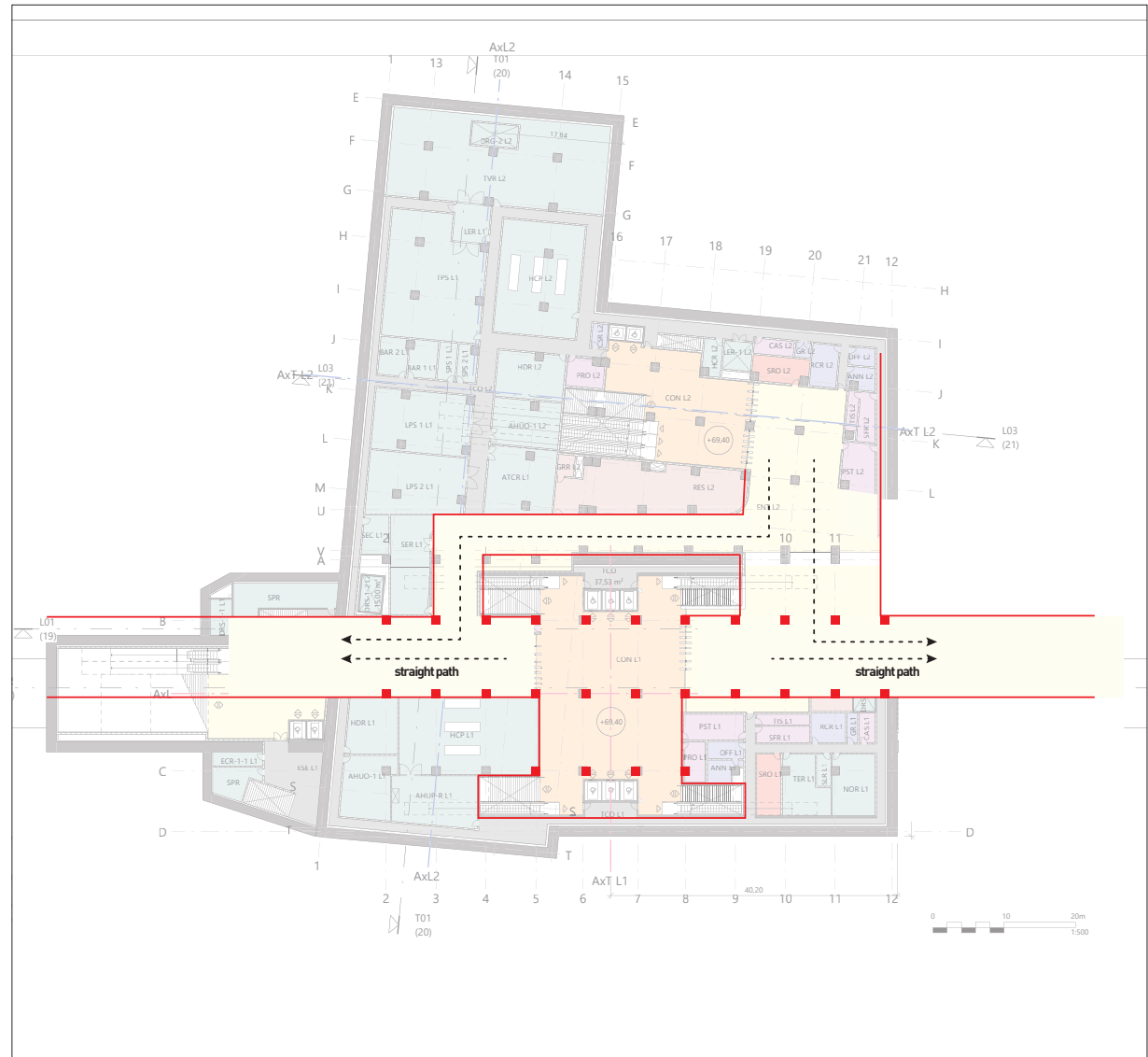
savski trg

Savski trg Floor

1. Straight path from east and west accesses to Line 1 concourse.

IMPROVEMENT

Concourse Level [-1]

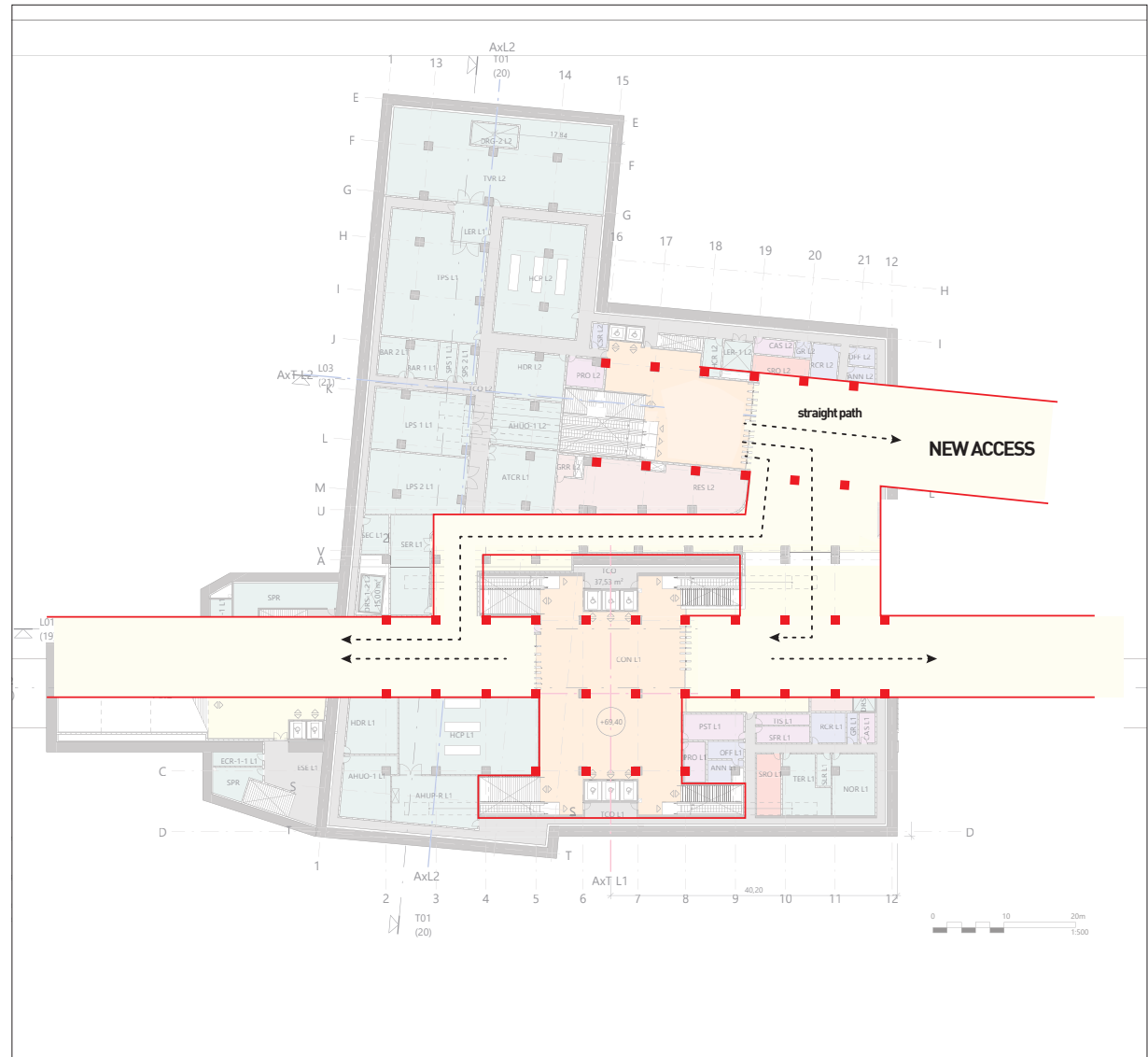


Savski trg Floor

2. Create new access for Line 2 with straight path to concourse.

IMPROVEMENT

Concourse Level [-1]



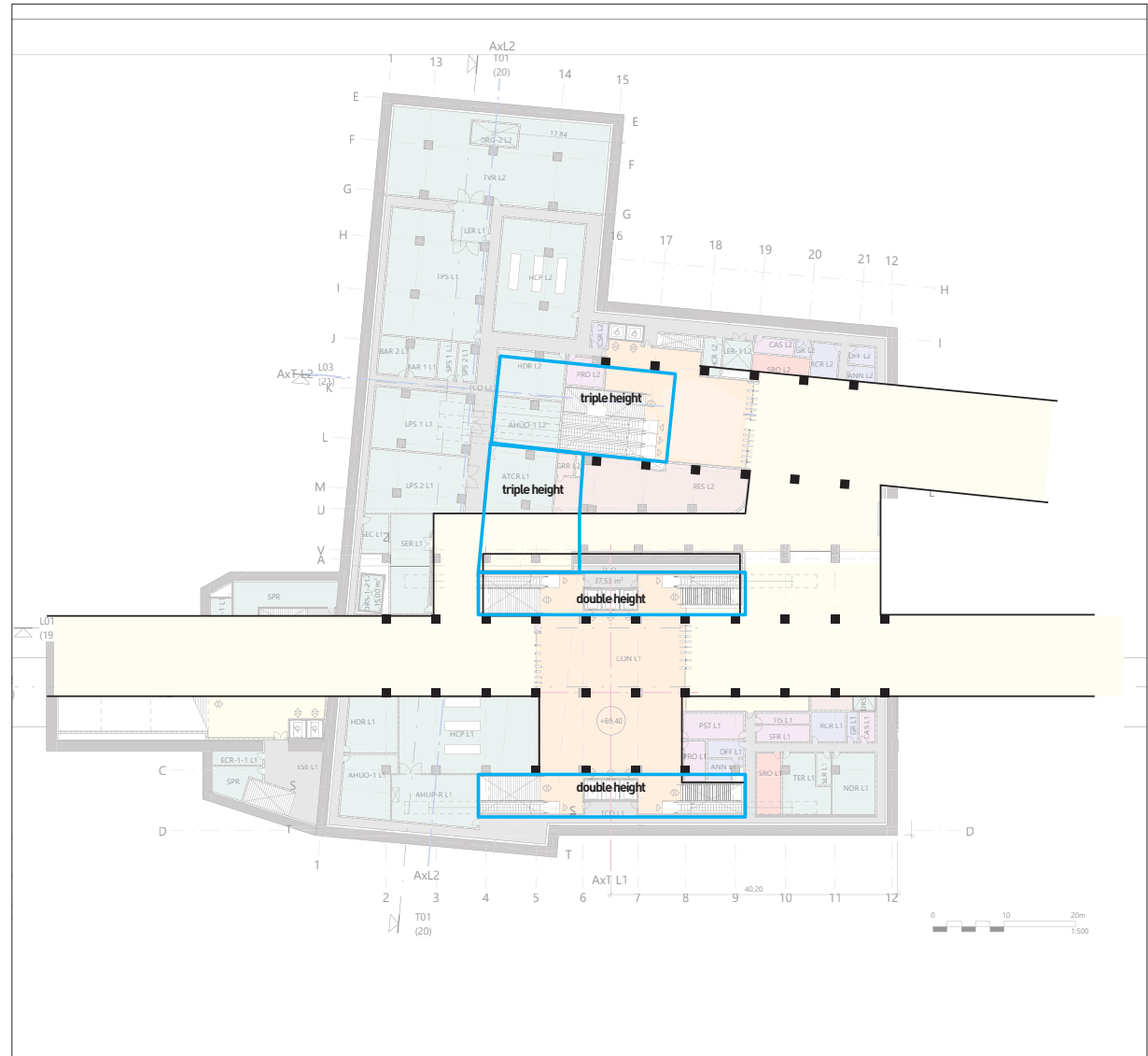
Savski trg

Air

1. Create triple height volumes connecting Line 1 and Line 2 spaces.

IMPROVEMENT

Concourse Level [-1]



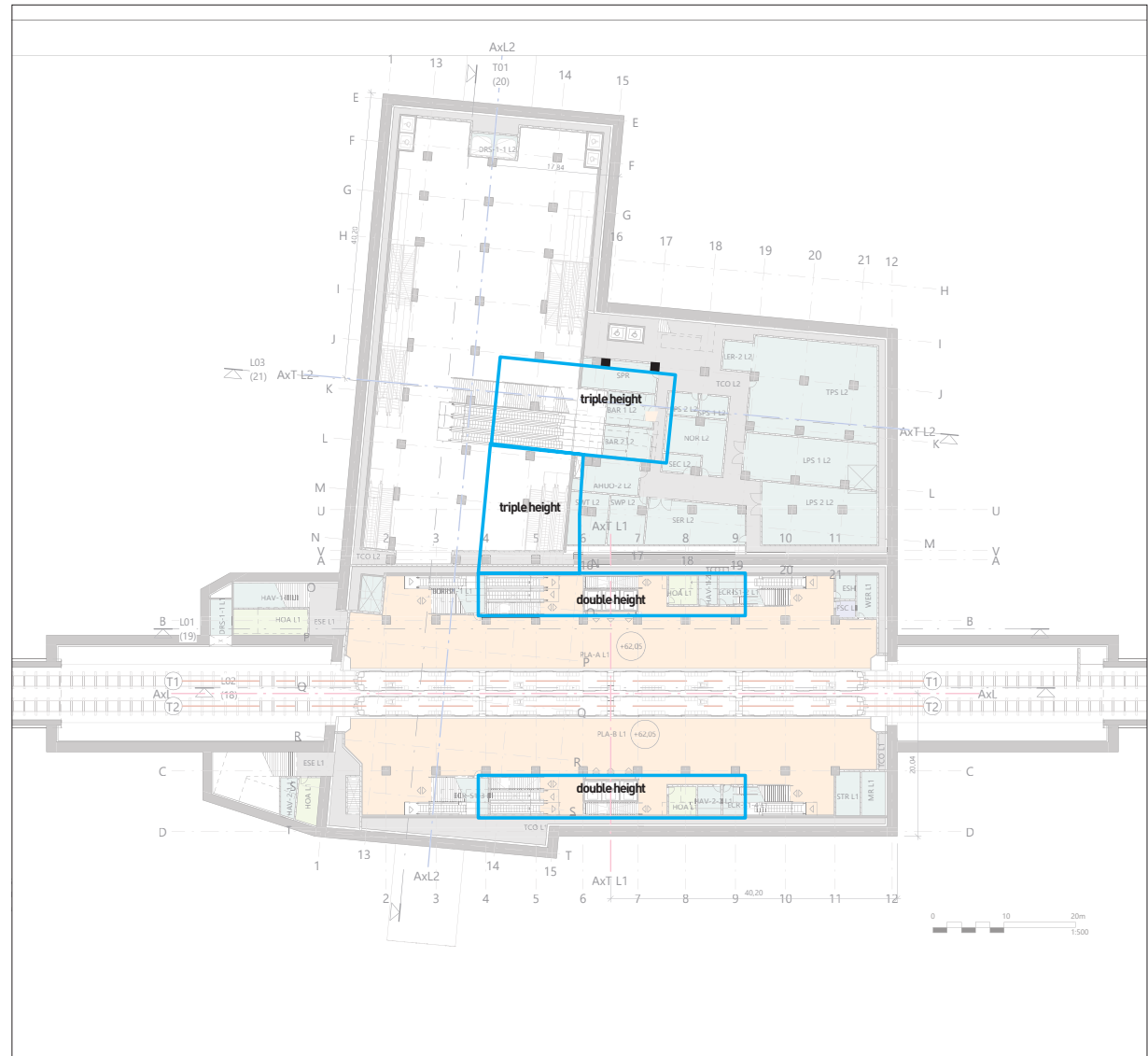
Savski trg

Air

1. Create triple height volumes connecting Line 1 and Line 2 spaces.

IMPROVEMENT

Platform/Mezzanine Level [-1/-2]



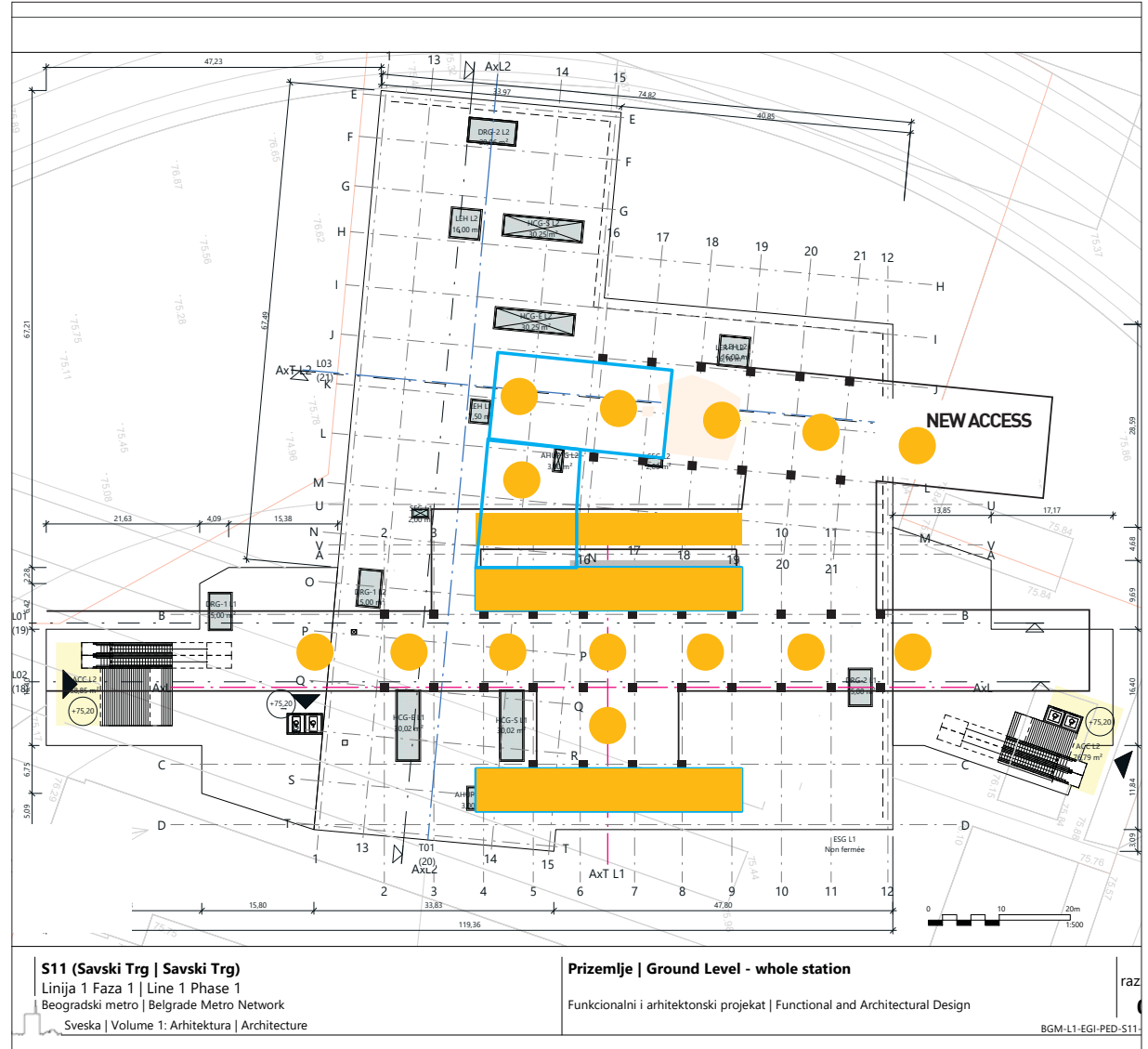
Savski trg

Light

1. Bring daylight to the concourse level with lightwells on ground level.

IMPROVEMENT

Concourse Level [-1]



železnik

Zeleznik

Floor

Air

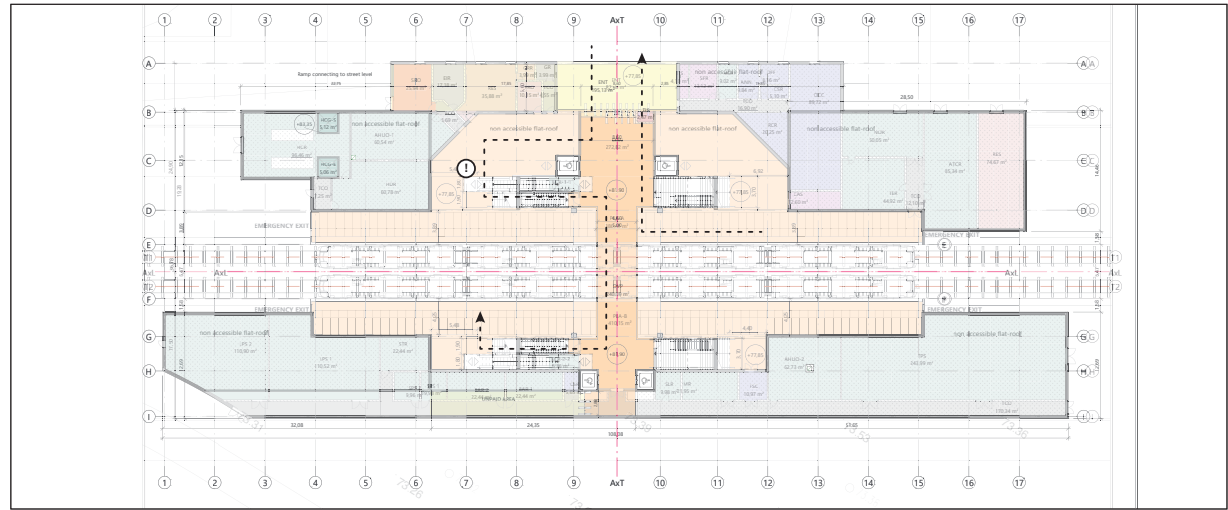
Light

Most flows on the overpass are one way:
from north (terminus arrival) to south
(terminus departure).

Moving the overpass towards the west
greatly simplifies flows and station legibility.

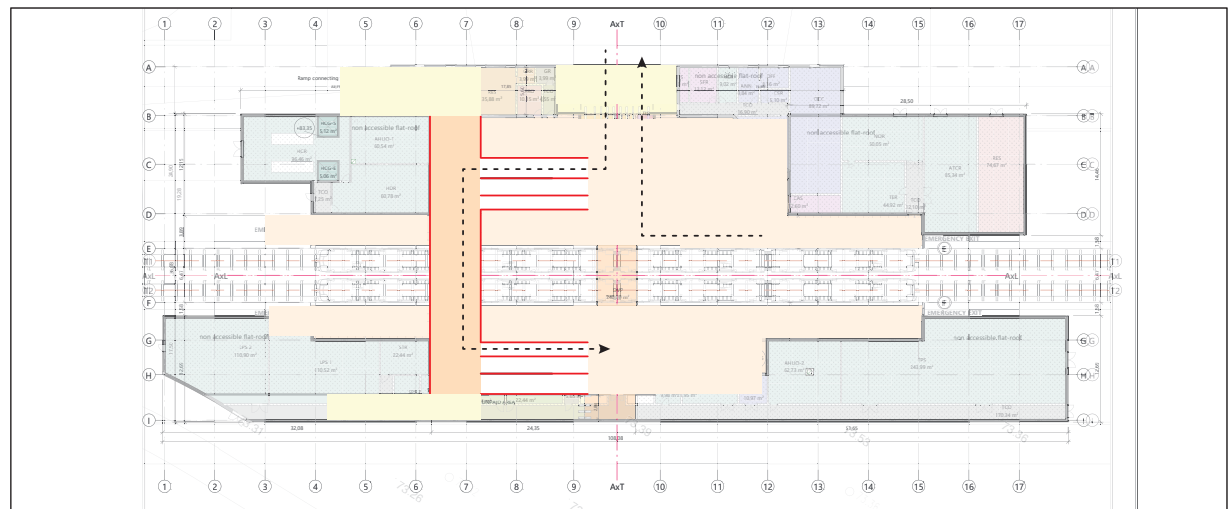
PROJECT

Overpass Level [+1]



IMPROVEMENT

Overpass Level [+1]



makiš

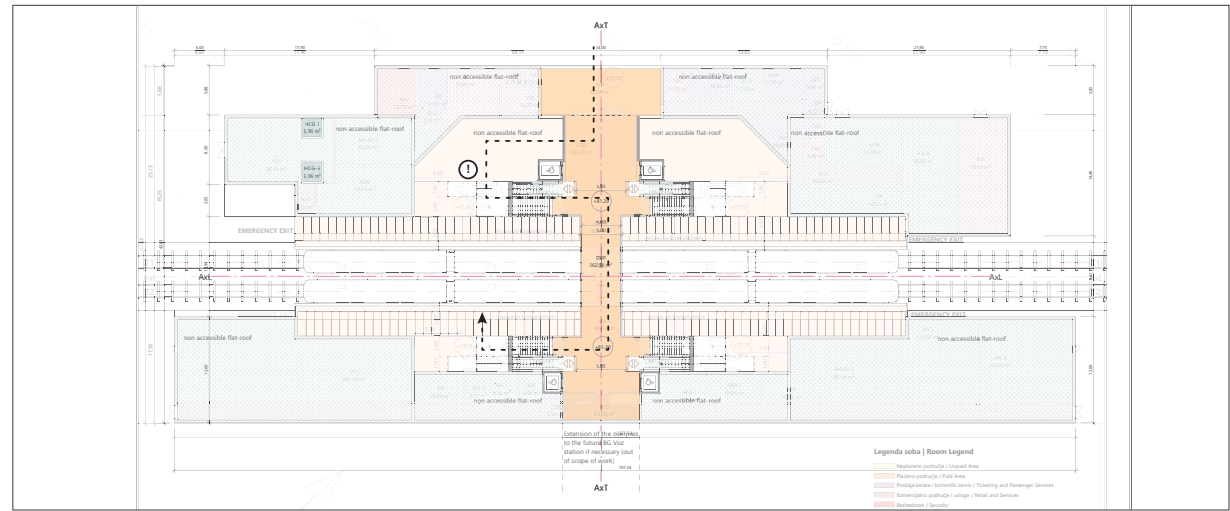
Makis

Floor
Air
Light

Moving the overpass towards the west or east greatly simplifies flows and station legibility.

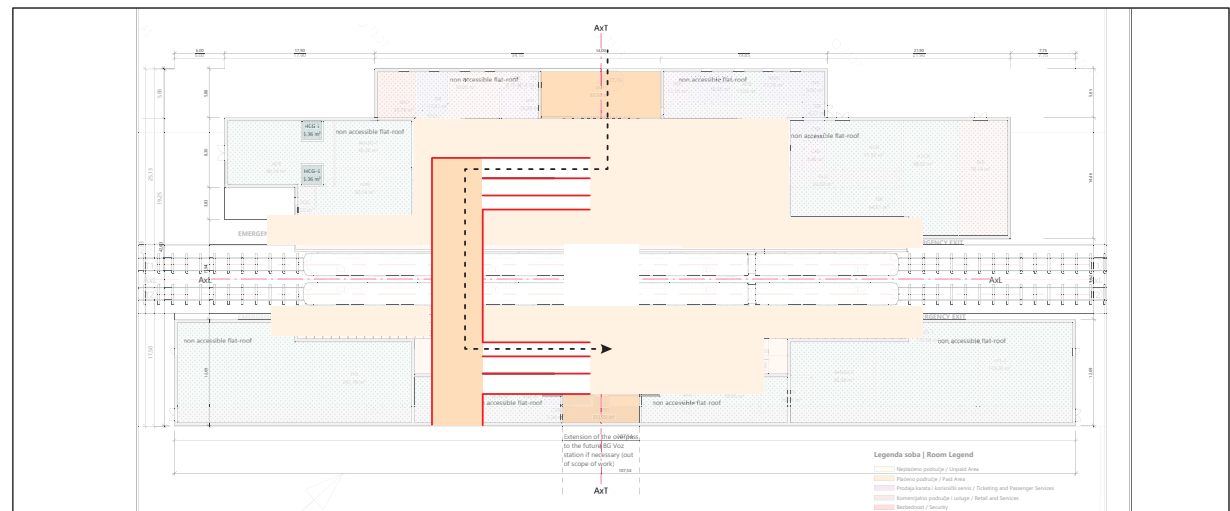
PROJECT

Overpass Level [+1]



IMPROVEMENT

Overpass Level [+1]



žarkovo

Zarkovo

Floor

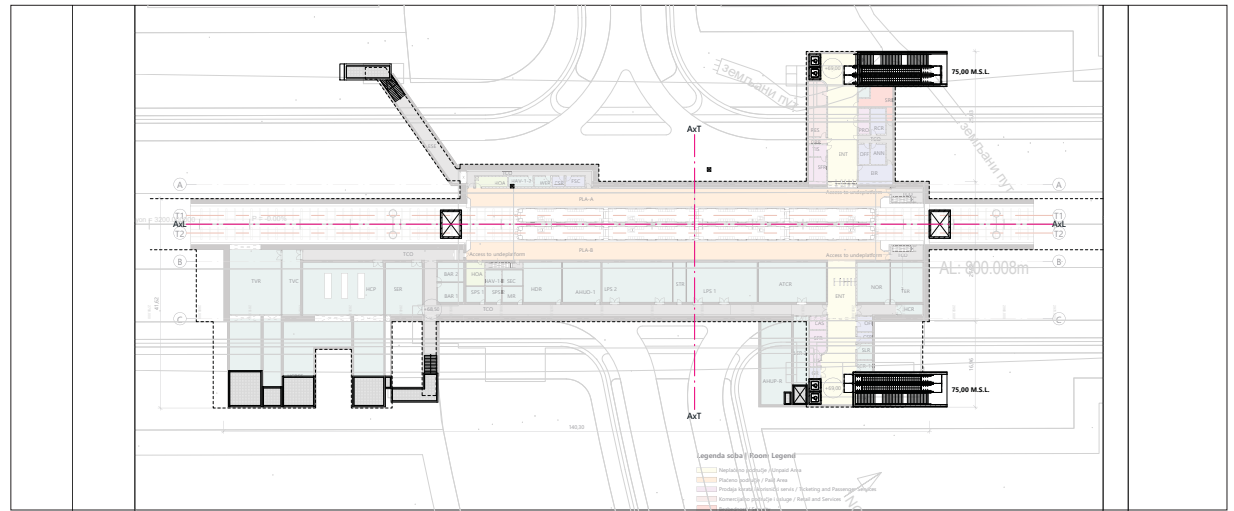
Air

Light

Bring daylight to the concourse level with lightwells on ground level.

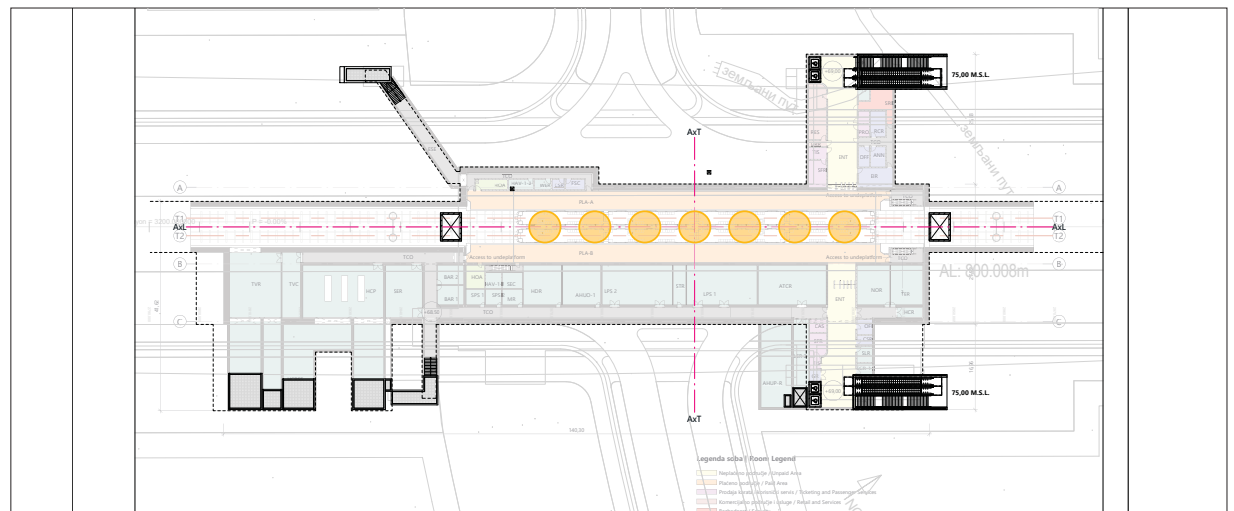
PROJECT

Concourse Level [-1]



IMPROVEMENT

Concourse Level [-1]



bele vode

Bele Vode

Floor

Air

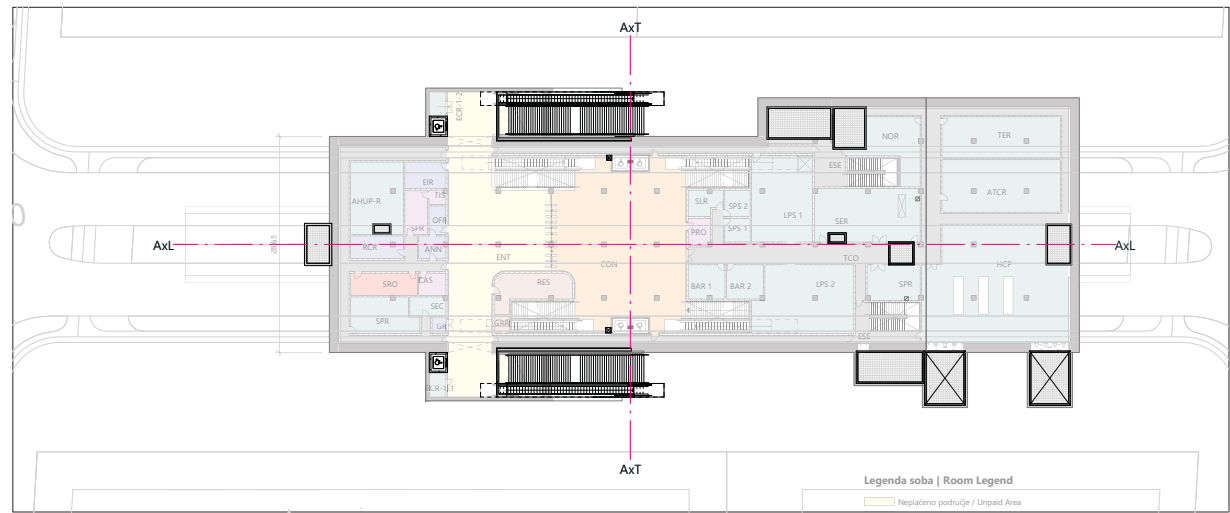
Light

Bring daylight to the concourse and platform levels with lightwells on ground level.

Carve a void to visually connect platforms and concourse.

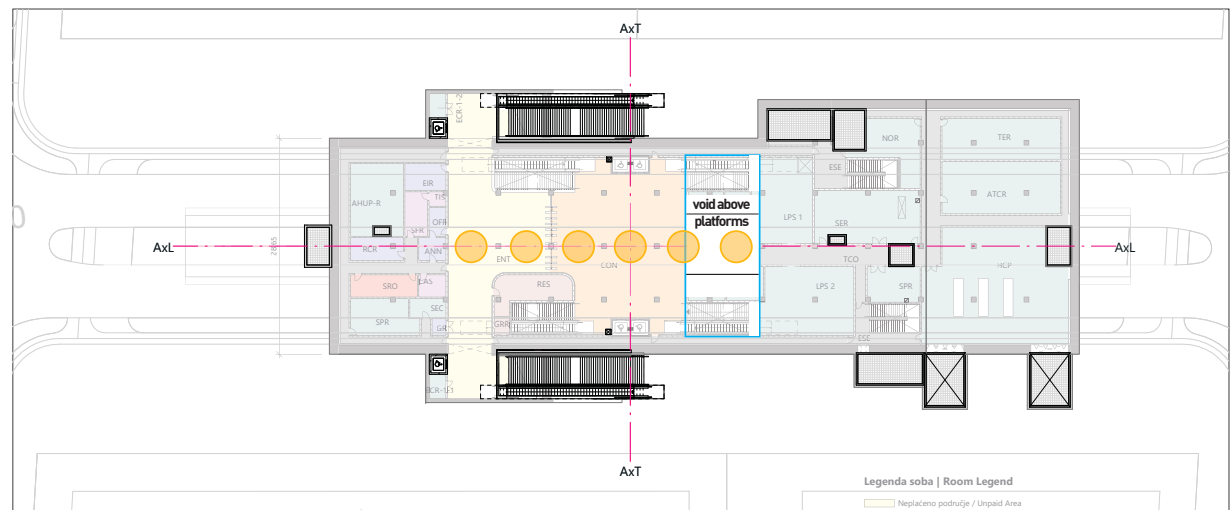
PROJECT

Concourse Level [-1]



IMPROVEMENT

Concourse Level [-1]



trgovačka

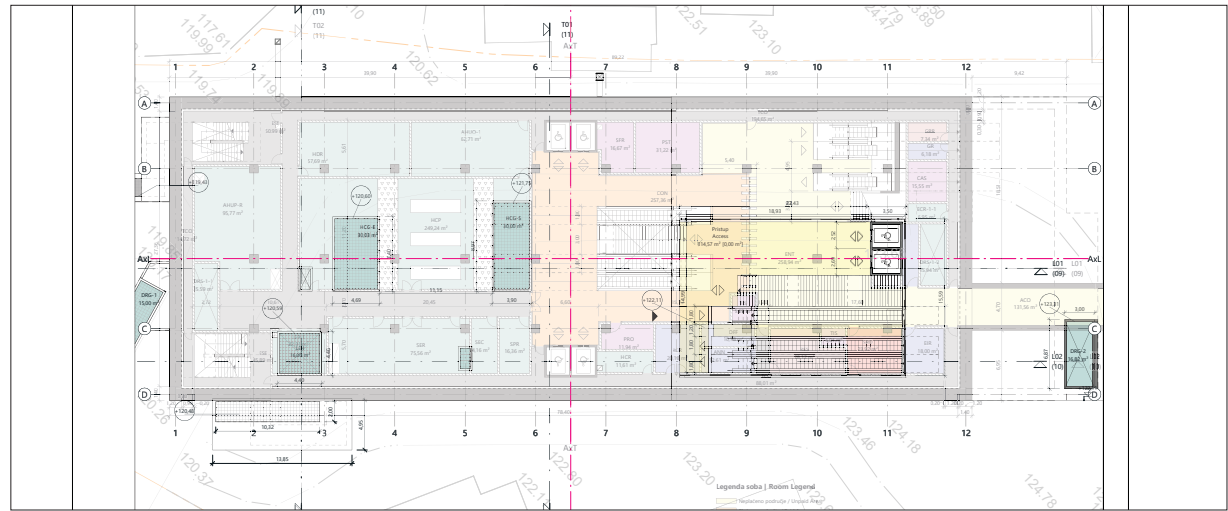
Trgovacka

Floor
Air
Light

Bring daylight to the concourse and mezzanine level with lightwells on ground level.

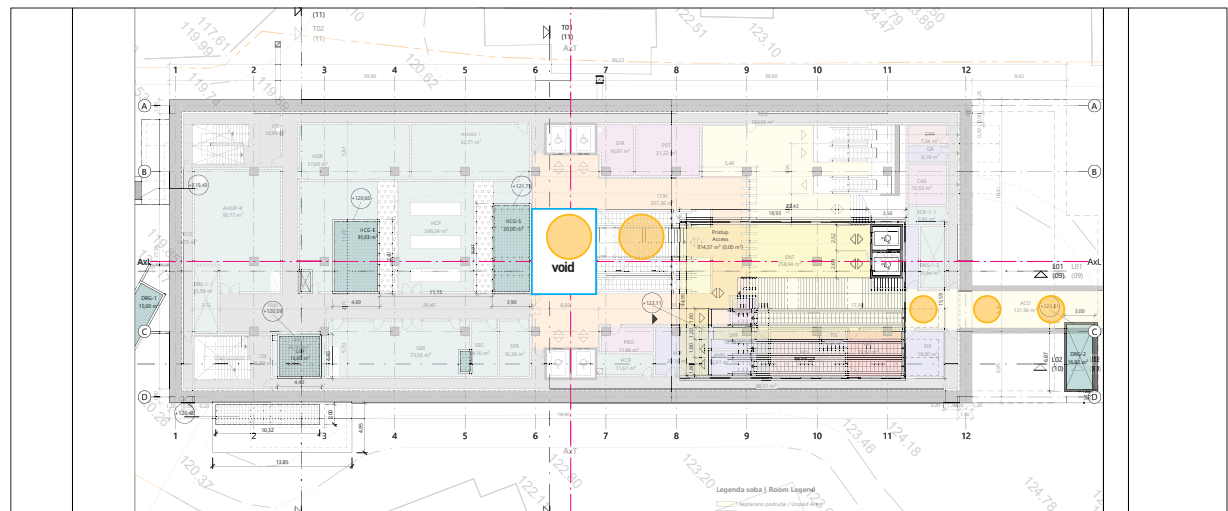
PROJECT

Concourse Level [-1]



IMPROVEMENT

Concourse Level [-1]



požeška

park banovo brdo

Zeleznik

Floor

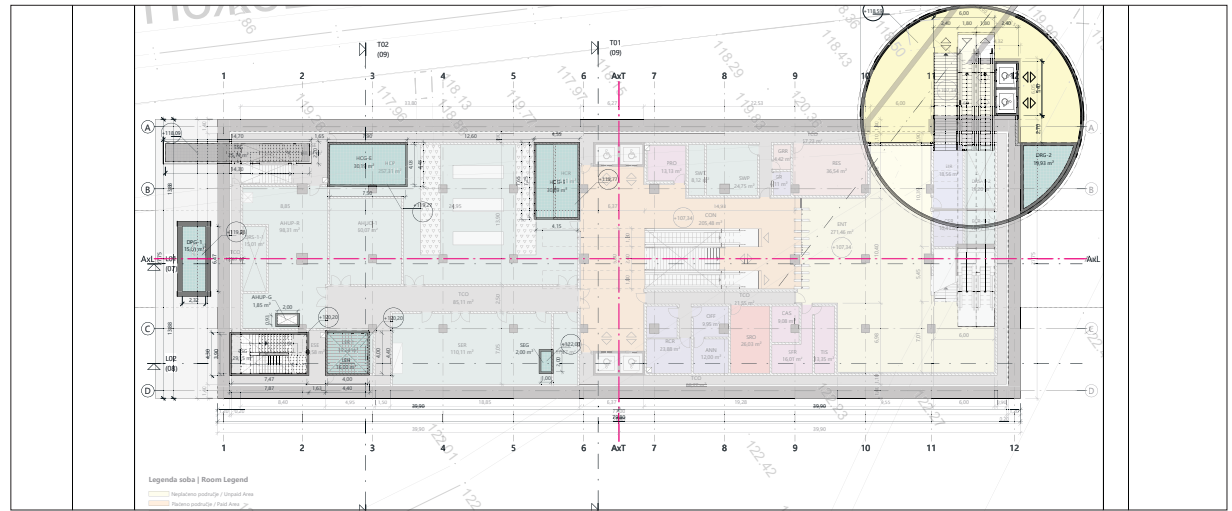
Air

Light

Bring daylight to the concourse level with lightwells on ground level.

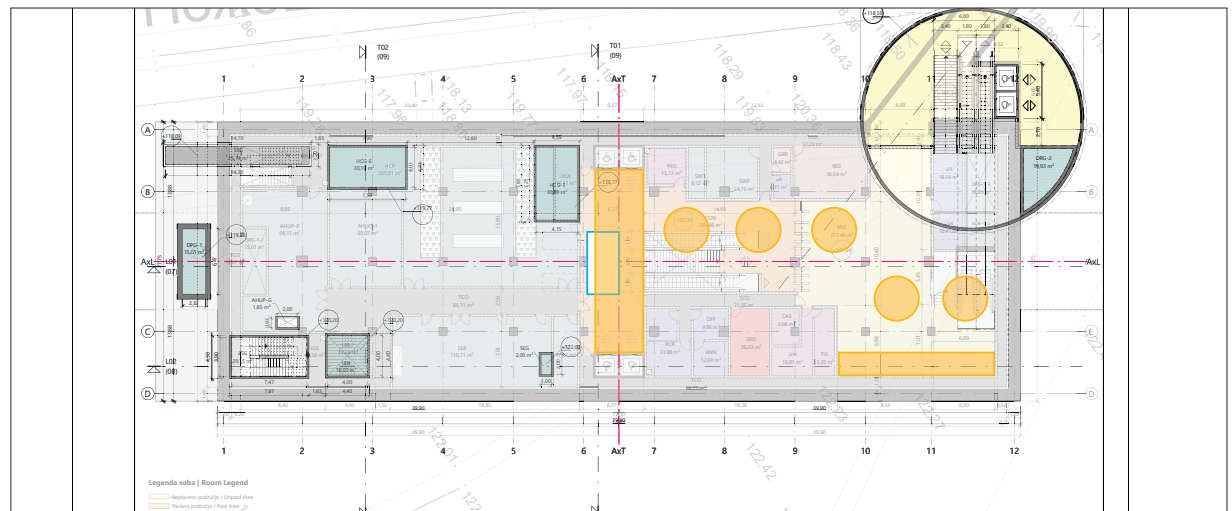
PROJECT

Concourse Level [-1]



IMPROVEMENT

Concourse Level [-1]



ada ciganlija

Ada Ciganlija

Floor

Air

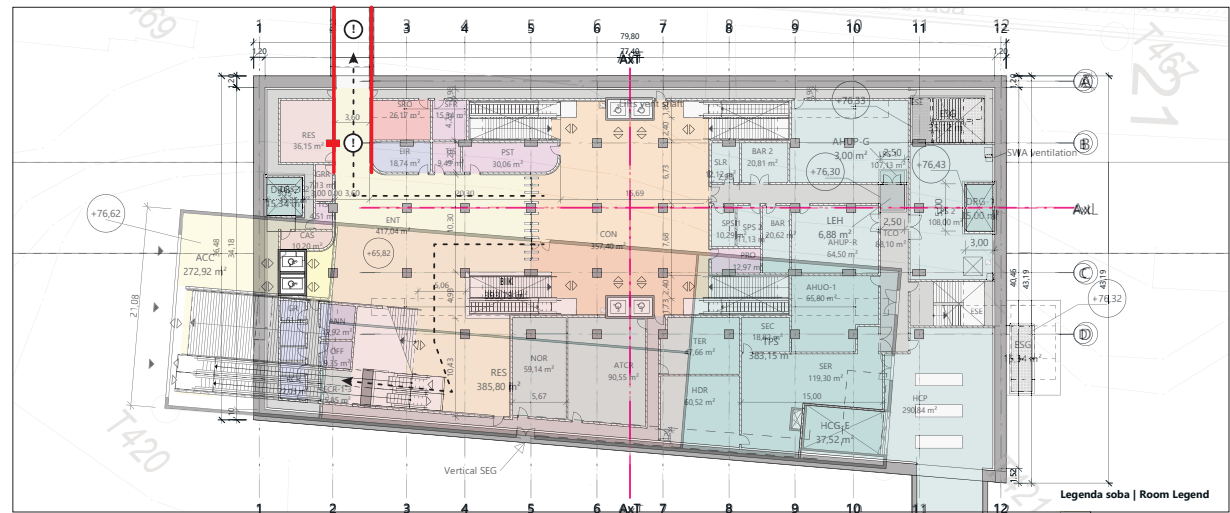
Light

Greatly enlarge northern access for large crowds can be expected on this axis for access to Ada Ciganlija.

Bring daylight to the concourse level with lightwells on ground level.

PROJECT

Concourse Level [-1]



IMPROVEMENT

Concourse Level [-1]



sajam

Sajam
Floor
Air
Light

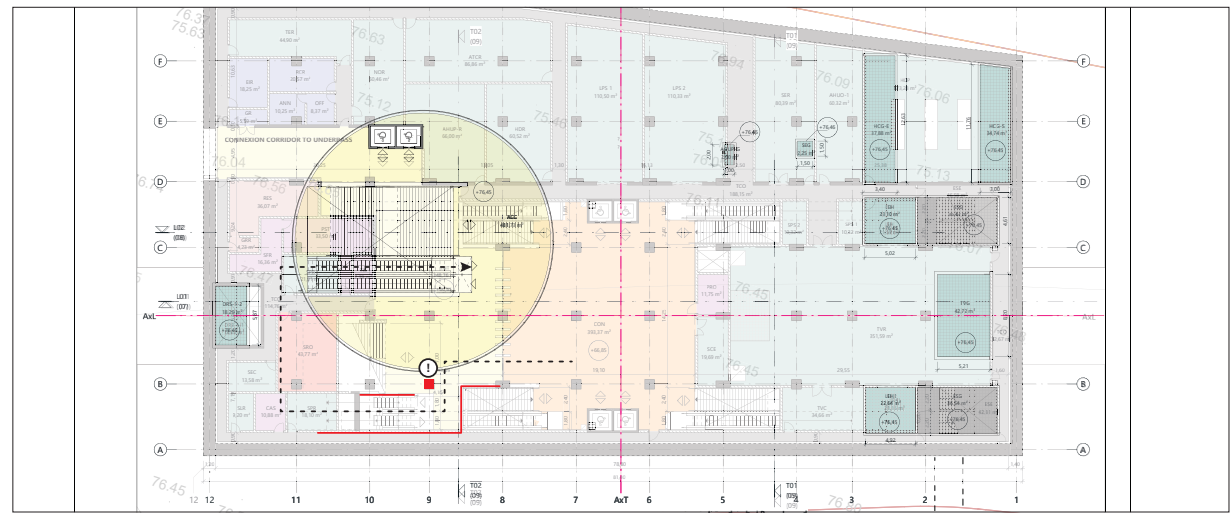
Make access straight.

Take into account future connection with bg:voz on viaduct (west of the metro station).

Bring daylight to the concourse level with lightwells on ground level.

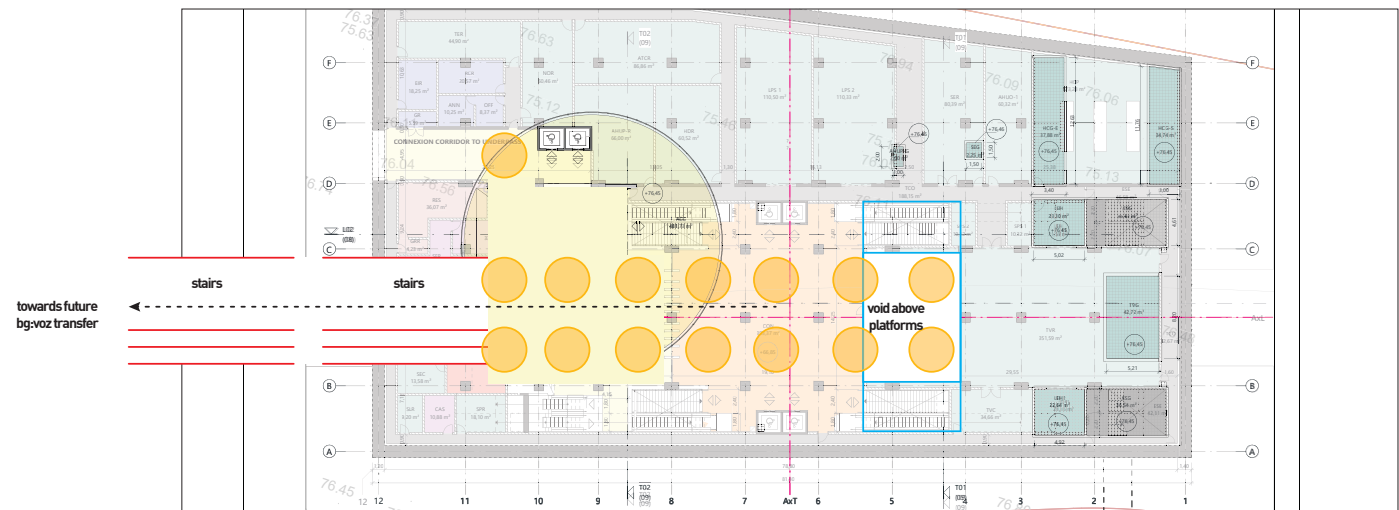
PROJECT

Concourse Level [-1]



IMPROVEMENT

Concourse Level [-1]



mostar

Mostar

Floor

Air

Light

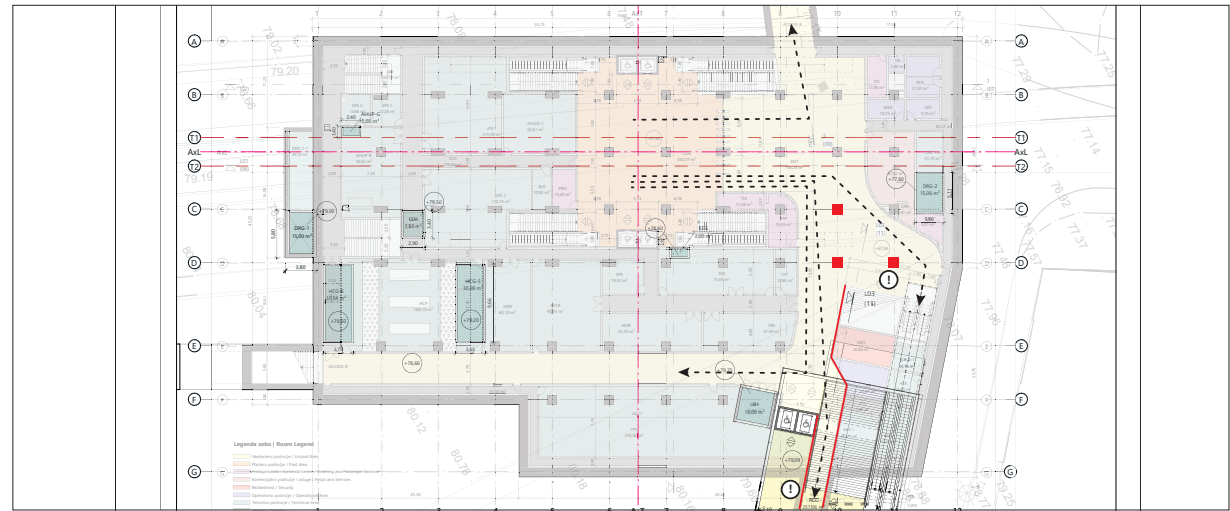
Straighten paths.

Bring daylight to the concourse level with lightwells on ground level.

Greatly enlarge access C corridor.

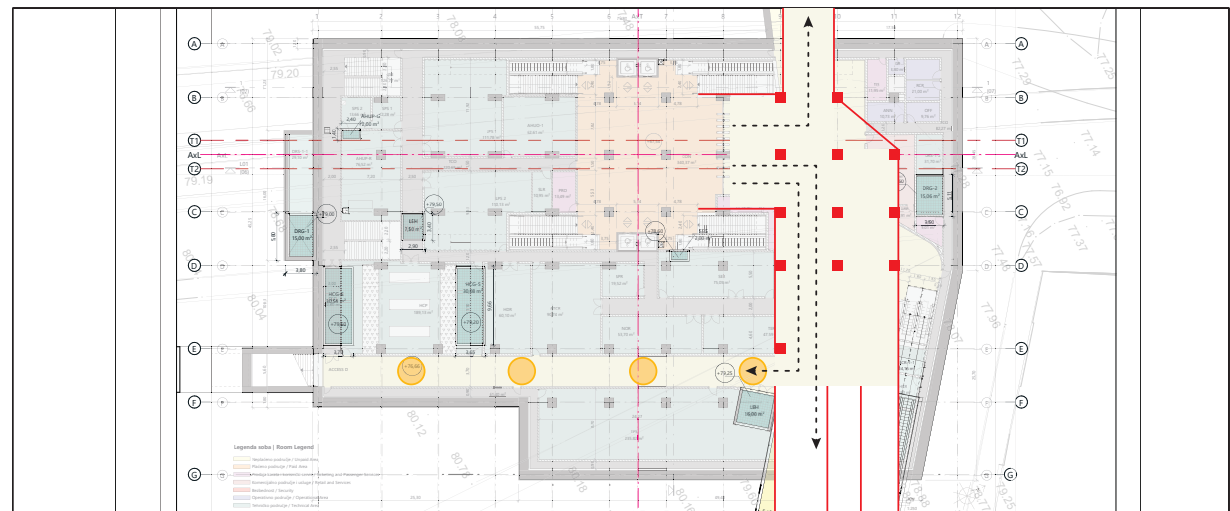
PROJECT

Concourse Level [-1]



IMPROVEMENT

Concourse Level [-1]



skadarlija

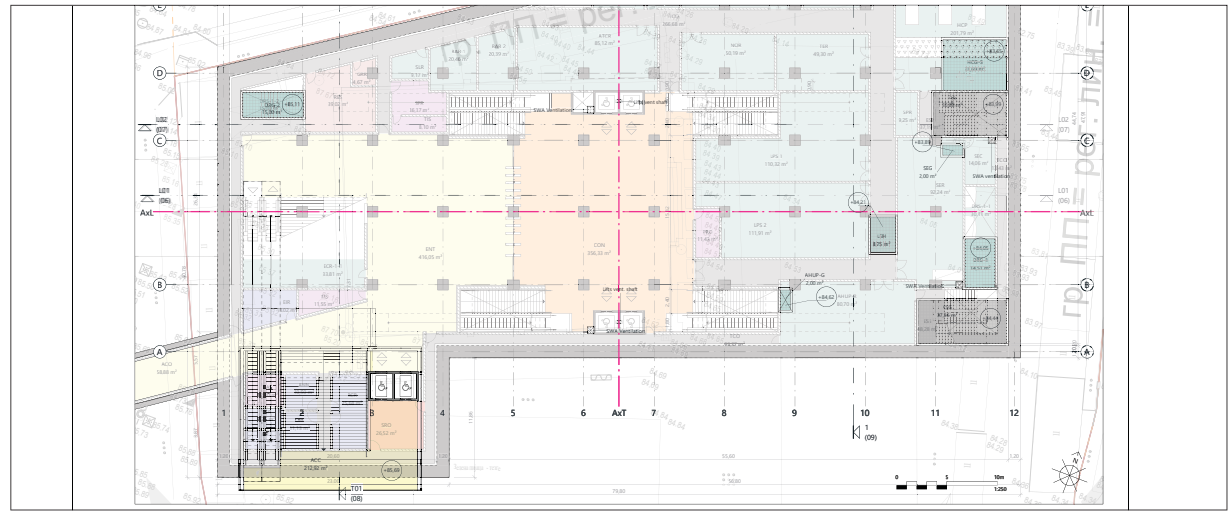
Skadarlija

Floor
Air
Light

Bring daylight to the concourse level with lightwells on ground level.

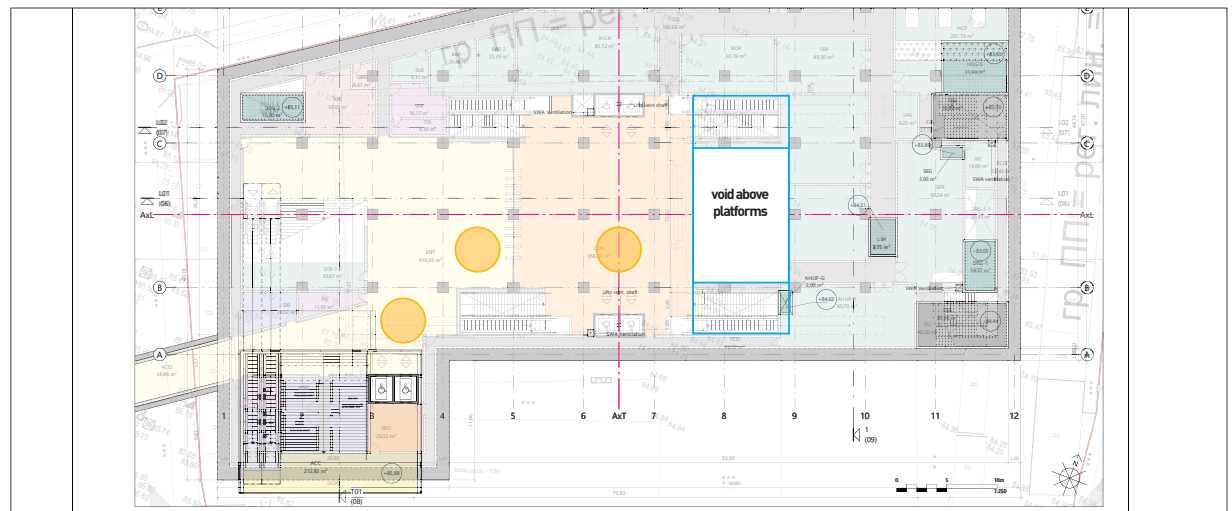
PROJECT

Concourse Level [-1]



IMPROVEMENT

Concourse Level [-1]



dunav

Dunav

Floor
Air
Light

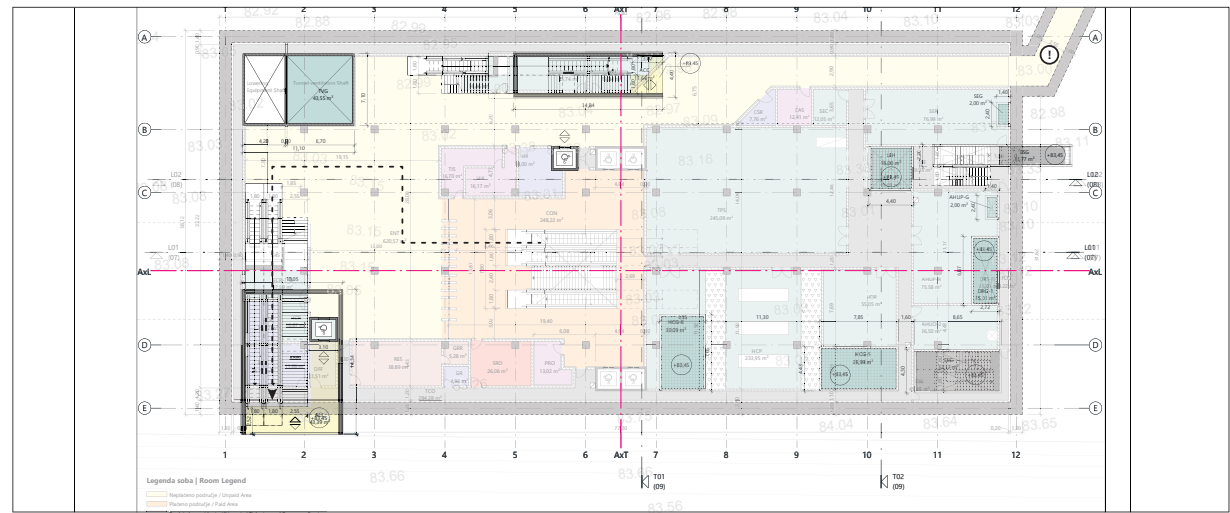
Rotate main access 90° to straighten paths.

Bring daylight to the concourse level with lightwells on ground level.

Enlarge secondary access (north-east).

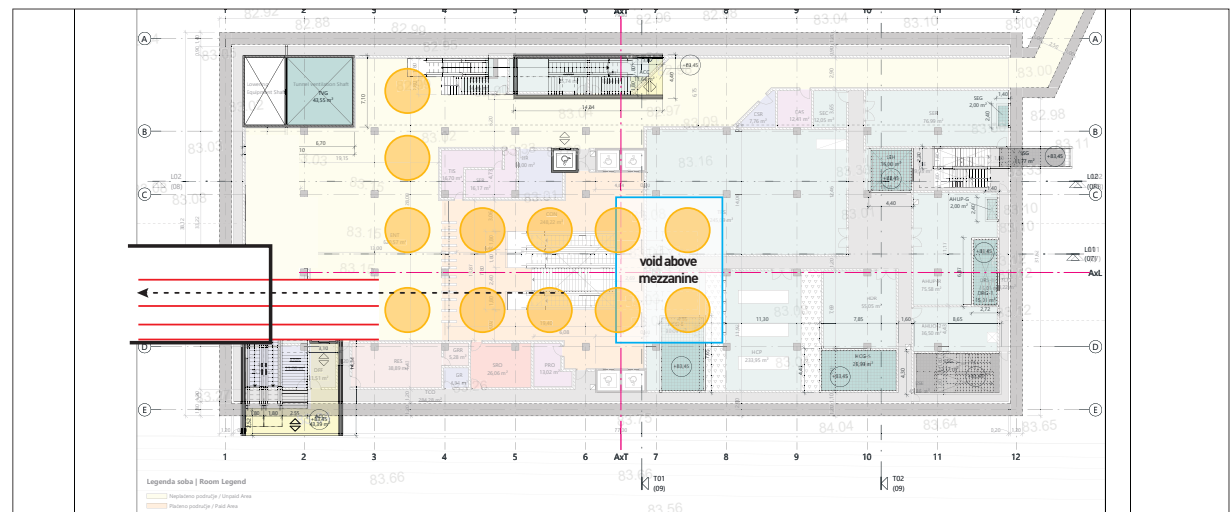
PROJECT

Concourse Level [-1]



IMPROVEMENT

Concourse Level [-1]



pančevački most

Pancevacki most

Floor

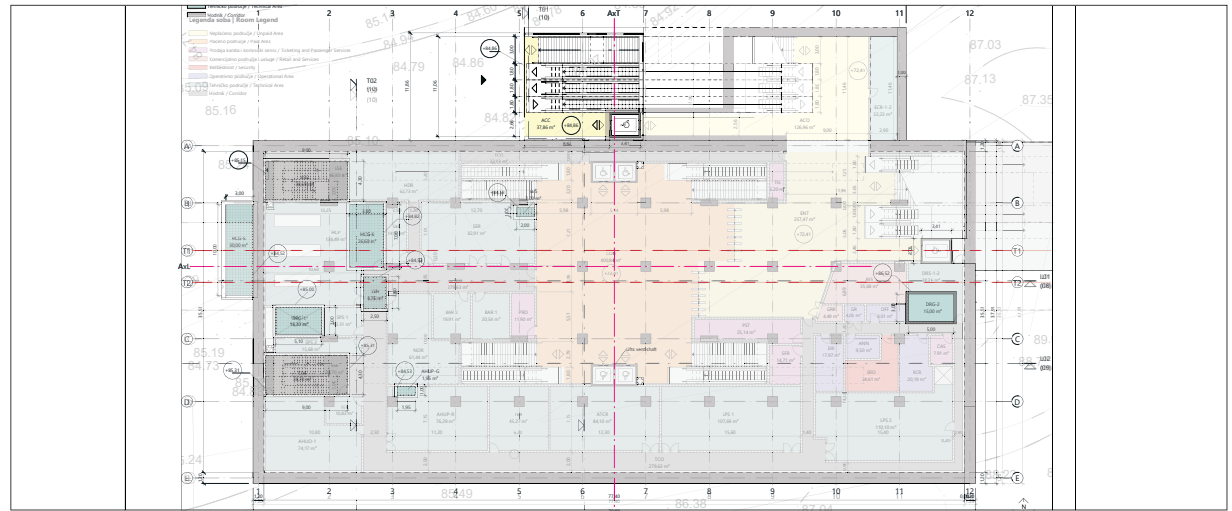
Air

Light

Bring daylight to the concourse level with lightwells on ground level.

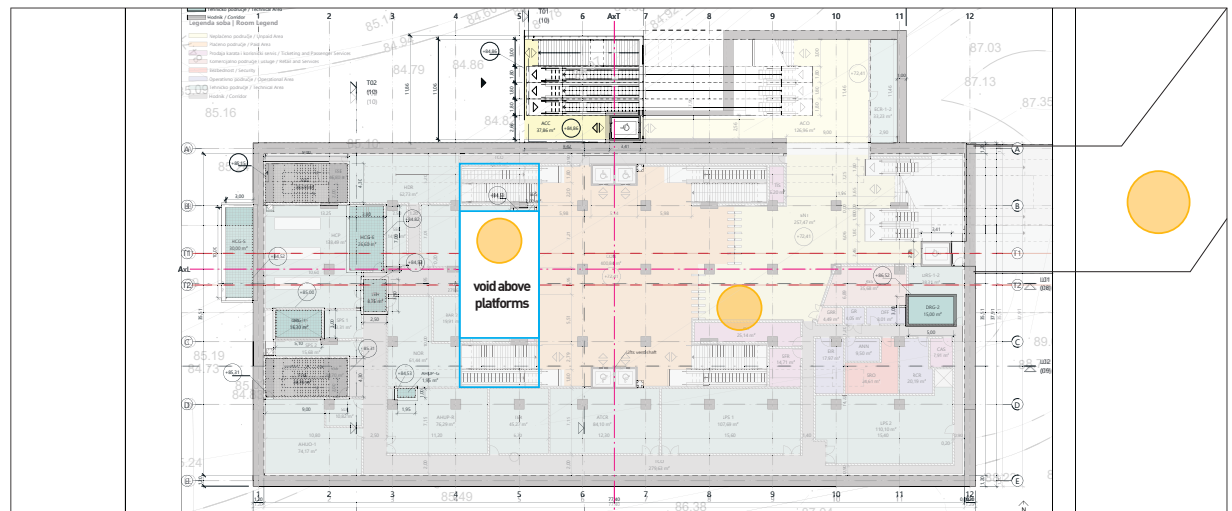
PROJECT

Concourse Level [-1]



IMPROVEMENT

Concourse Level [-1]



karaburma

Karaburma

Floor

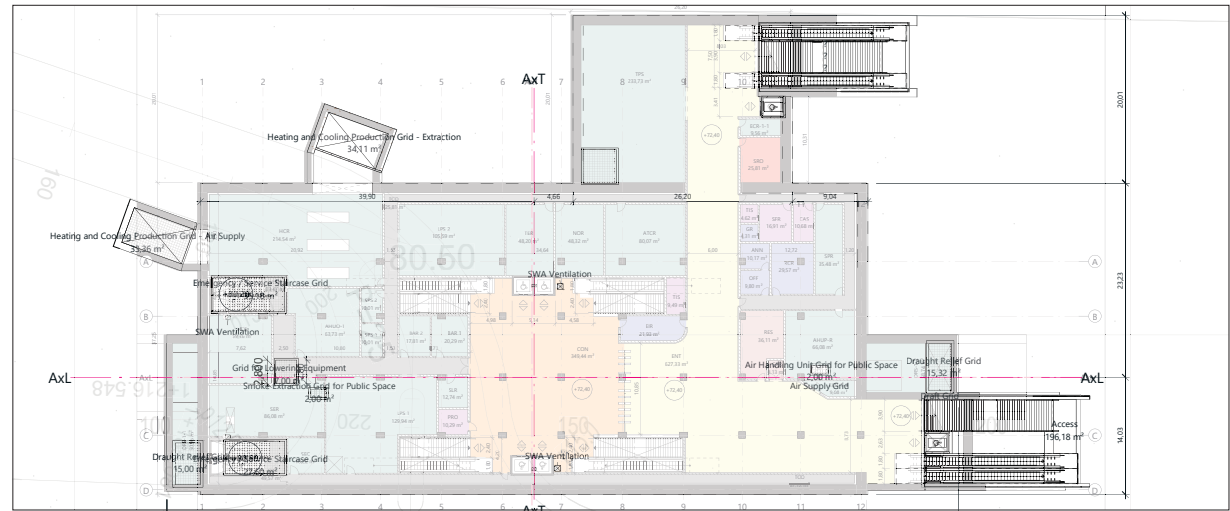
Air

Light

Bring daylight to the concourse level with lightwells on ground level.

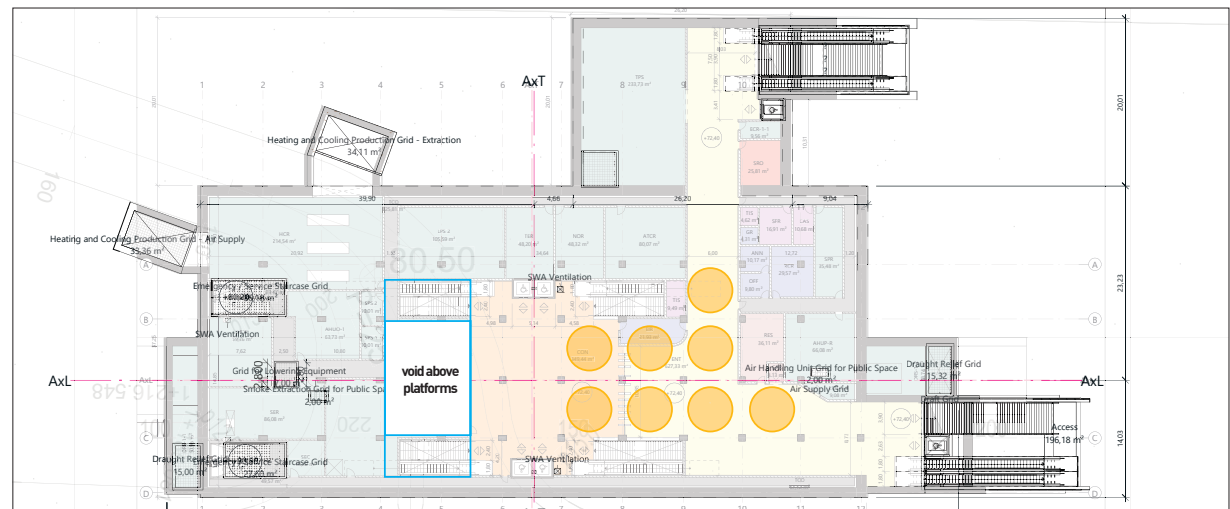
PROJECT

Concourse Level [-1]



IMPROVEMENT

Concourse Level [-1]





Dubai

Dubai Design District
Building 1B, Office 502
P.O.BOX 41175 Dubai, U.A.E
+971 4 2583308

Tunis

6 Rue Taher Zaouech
Cité Mahragéne - Belvédère
+216 71 860 352

Paris

Jug Cerovic Architecte dplg
85 bd Pasteur
75015 Paris

Beirut

Beer Hassan,
Al Hazim Plaza
Beirut, Lebanon